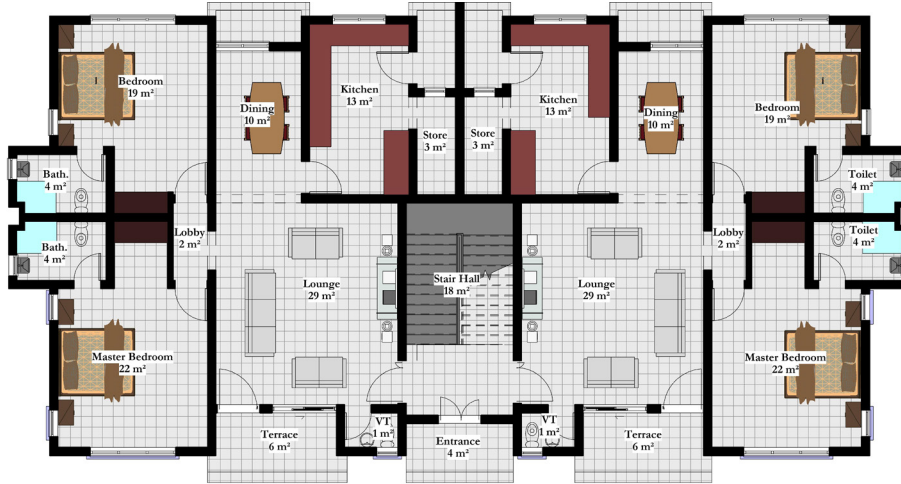


# KING'S FLAT

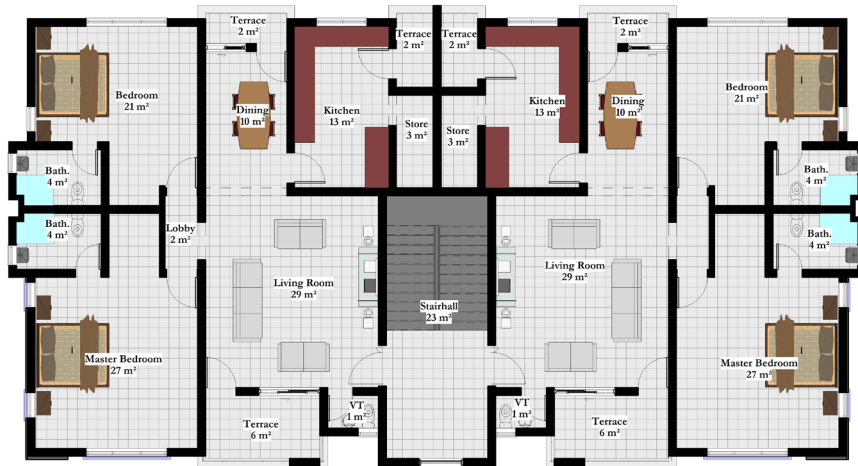
This land will make you feel like a King in his Palace. With 750 square meter, The KING'S FLAT offers 6 units of two bedrooms blocks of flat that is opulent by birth and accords a splendid view. On this land, you can have an all en-suite Living room, Dining and Finely-Proportioned windows, Foyer, Visitors' Toilet, Kitchen, with exquisite details and finishing, and atleast two car parking spaces, all geared towards giving you the desired amount of personality while offering a unique experience to an interesting lifestyle upgrade.

750SQM





**Ground Floor Plan**





**First Floor Plan**



**Site Plan**



REAL ESTATE | INVESTMENT | PROJECT MANAGEMENT

 NO. 8 Abdullahi Ibrahim Steet, Utako FCT, Abuja  +234 905 055 6897 | 0818 644 5930

 [info@edinandpeople.com](mailto:info@edinandpeople.com)  [www.edinandpeople.com](http://www.edinandpeople.com)