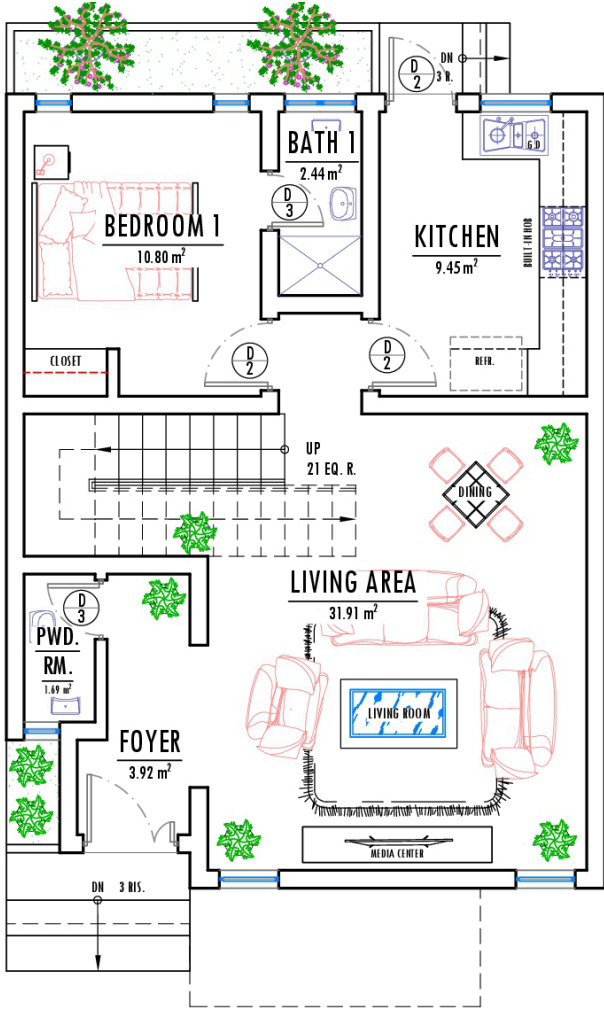


NOBLE

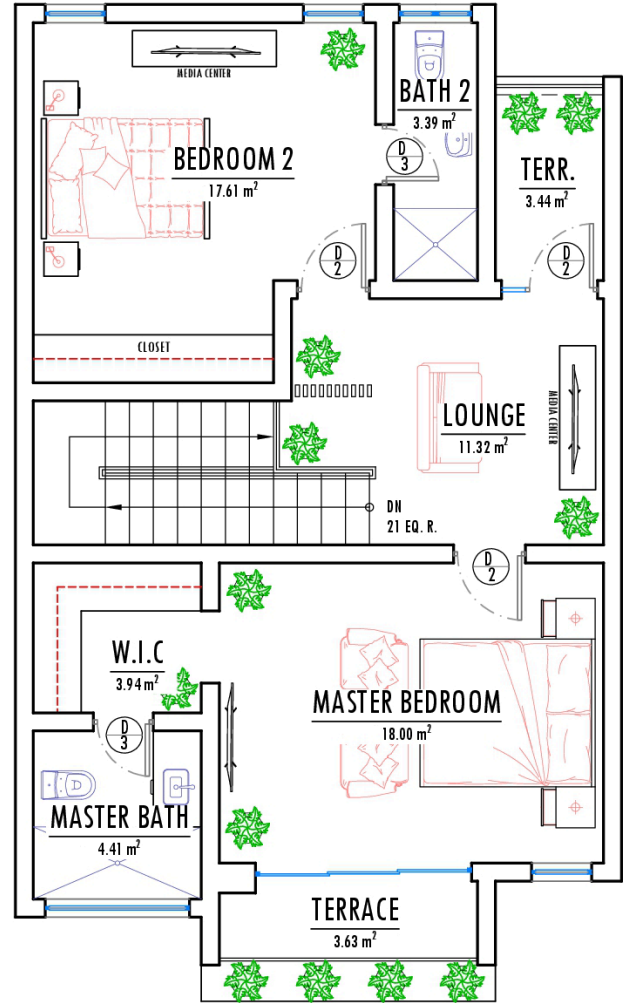
This compact 150 square meter land accommodates a 3 Bedroom terrace duplex which is an ideal house for a small family, with ample room spaces, fully functional, yet cost-effective to build. On this land, a 3 Bedroom all en-suite room, including a Living room, Dining, Foyer, Visitor's Toilet and a Private Lounge space is achievable. That "happily ever after" life happens here.

150SQM

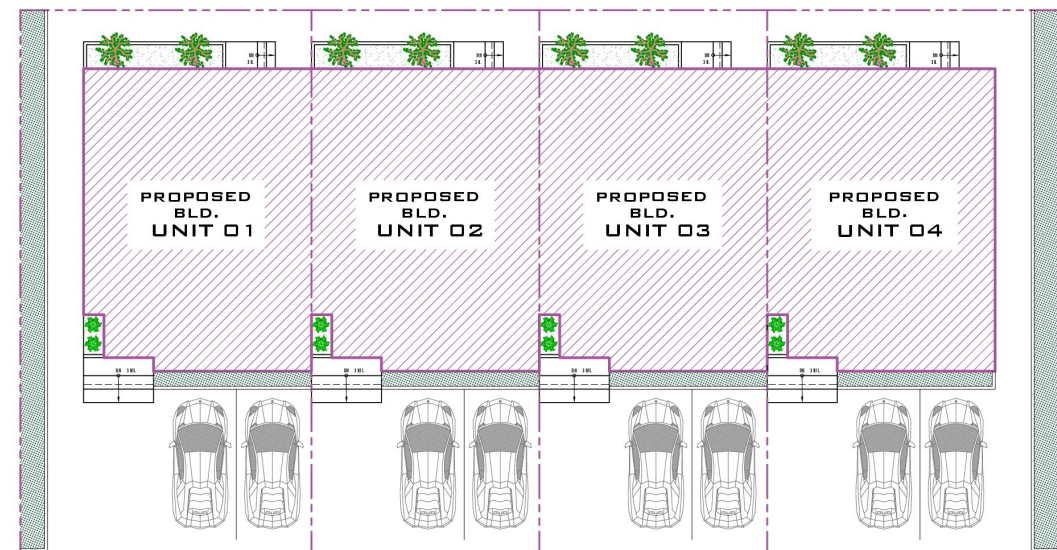




Ground Floor Plan



First Floor Plan



Site Plan