

INVEST IN LAND

Falcon's Gate

📍 Behind APDC Capital Estate, Kubwa Express, FCT Abuja



Edin&people

REAL ESTATE | INVESTMENT | PROJECT MANAGEMENT

WELCOME HOME

Nestled in the serene environs of Kaba, just behind APDC Capital Estate, Falcon's Gate is a premier residential community that blends modern luxury with natural beauty. Developed by Edin and People Limited, this premier estate offers a harmonious blend of modern architecture, serene environment, and a vibrant community lifestyle, designed to cater to your every need, providing comfort, elegance, and convenience in every corner.

Additionally, this jewel offers a range of premium amenities to ensure a comfortable and vibrant lifestyle for all residents.

Enjoy the best in modern living

24/7 Security

Peace of mind with round-the-clock protection.

Paved Roads and Walkways

Beautifully landscaped and well-maintained.

Landscaped Gardens

Green spaces for relaxation and play.

Recreational Areas

Perfect for family activities and leisure.

Shopping and Retail Centers

Convenient access to daily essentials

Proximity to Schools and Healthcare Facilities

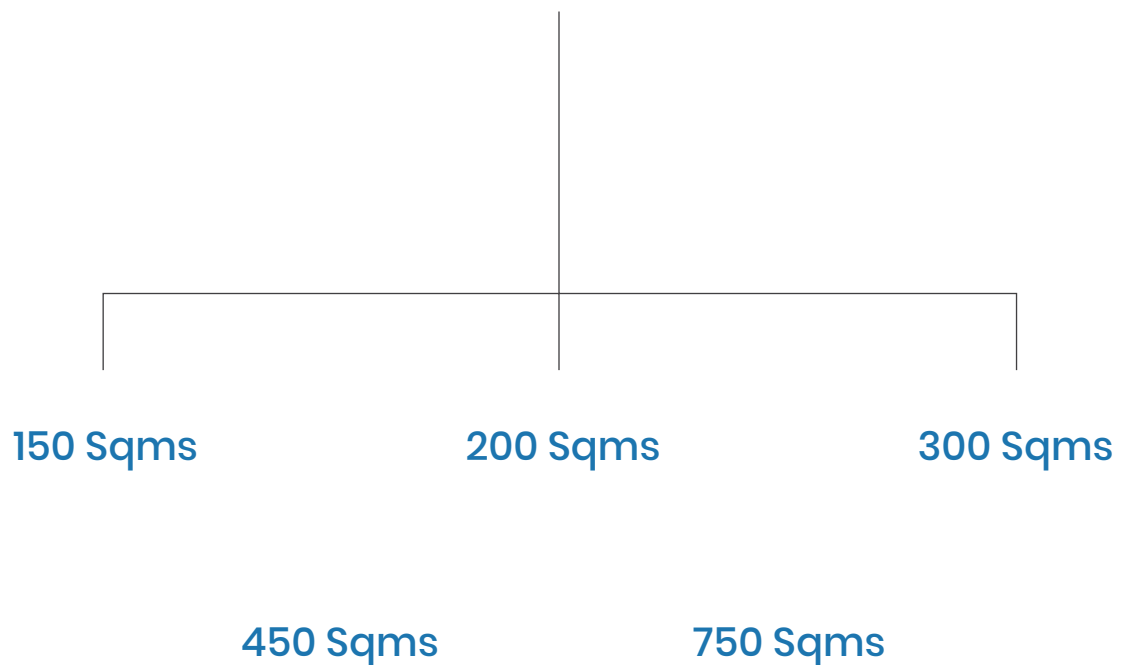
Green spaces for relaxation and play.

Falcon's Gate enjoys excellent connectivity to major parts of Abuja. The strategic location ensures residents have easy access to:

- Central Business District: Quick commute to work and business hubs.
- Airports: Convenient travel for business and pleasure.
- Major Highways: Seamless connectivity to the rest of the city.
- Recreational and Entertainment Hubs: Enjoy the best of Abuja's vibrant culture.

THERE'S
A

- SPACE
FOR
- EVERYONE



DOVE

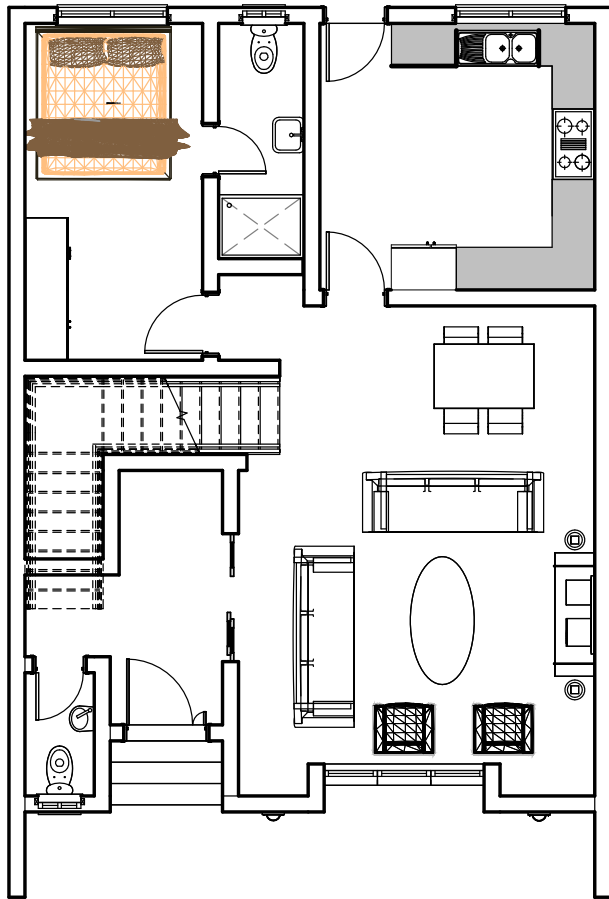
150 SQMs

3 Bedroom Terrace Duplex

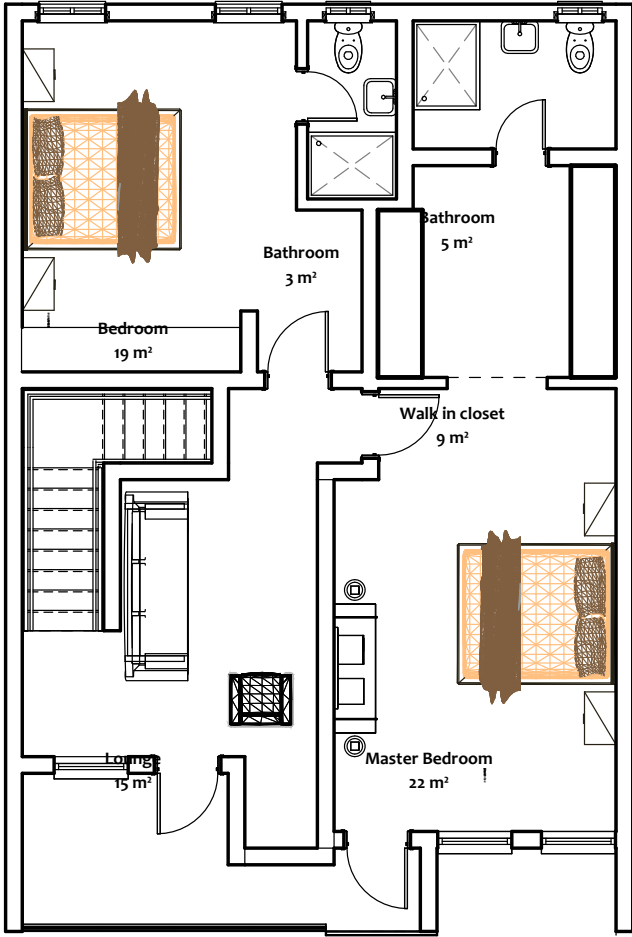
The Dove is deal for those who cherish simplicity and style. These 3-bedroom terrace duplexes are perfect for young families or individuals who likes to enjoy the seamless integration of modern design and functionality.

- **Spacious Living Area:** Perfect for family gatherings and relaxation.
- **Modern Kitchen:** Equipped with top-of-the-line appliances.
- **En-Suite Bedrooms:** Comfort and privacy in every room.
- **Private Parking:** Secure space for your vehicle.





GROUND FLOOR



FIRST FLOOR

SPARROW

200 SQMs

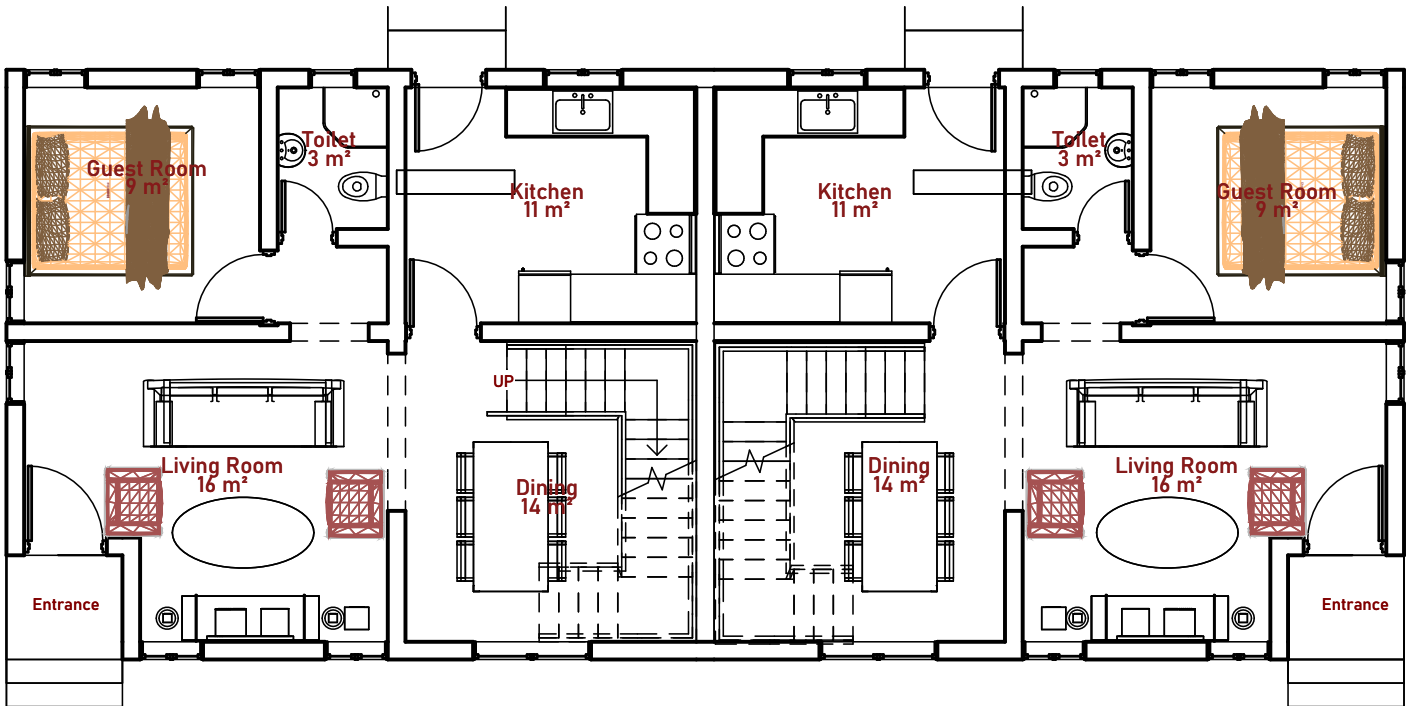
4 Bedroom Semi-Detached Duplex

Offering more space and enhanced privacy, our 4-bedroom semi-detached duplexes are perfect for growing families seeking a stylish and functional home.

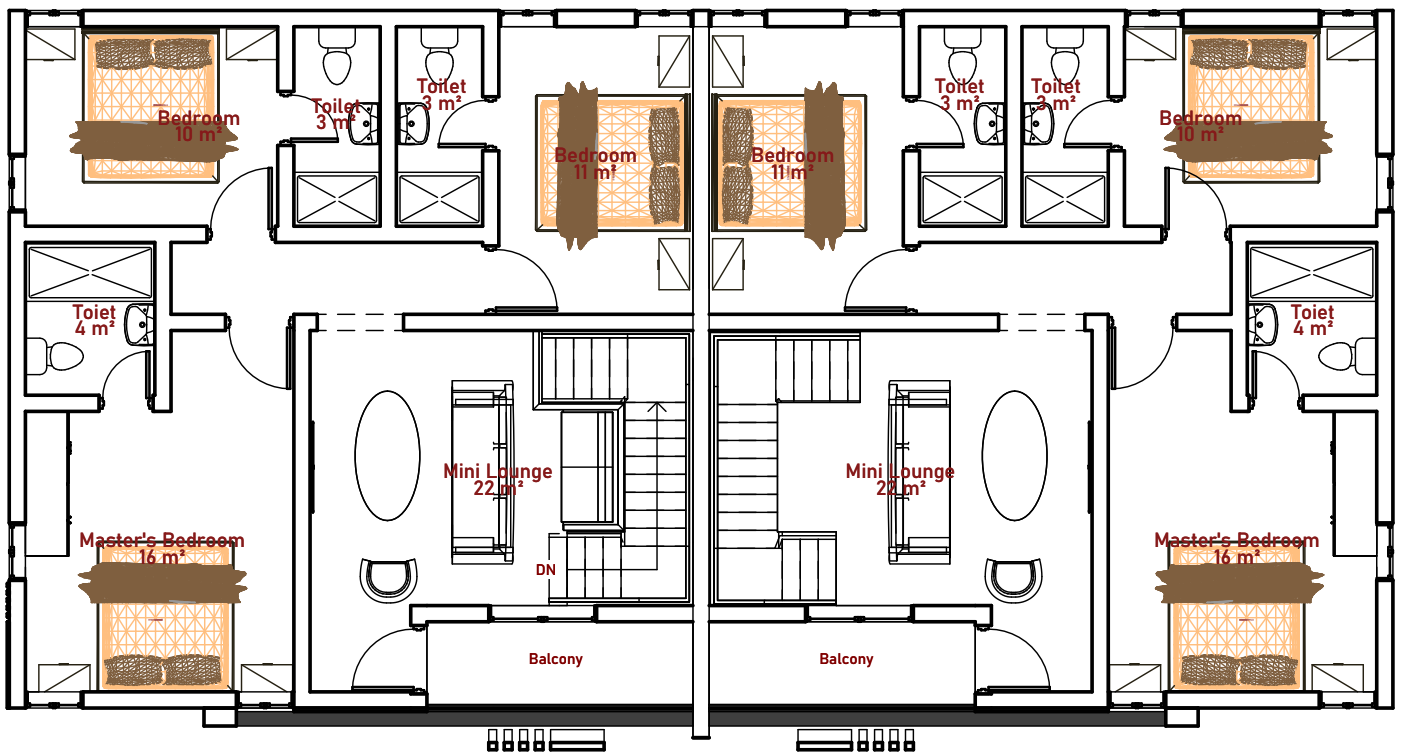
- **Elegant Living and Dining Areas:** Designed for entertaining and everyday living.
- **Gourmet Kitchen:** Featuring modern fittings and ample storage.
- **En-Suite Bedrooms:** Each room provides a personal retreat.
- **Ample Parking Space:** Convenience for your family and guests.



200 SQMs



GROUND FLOOR



FIRST FLOOR

PIGEON

300 SQMs

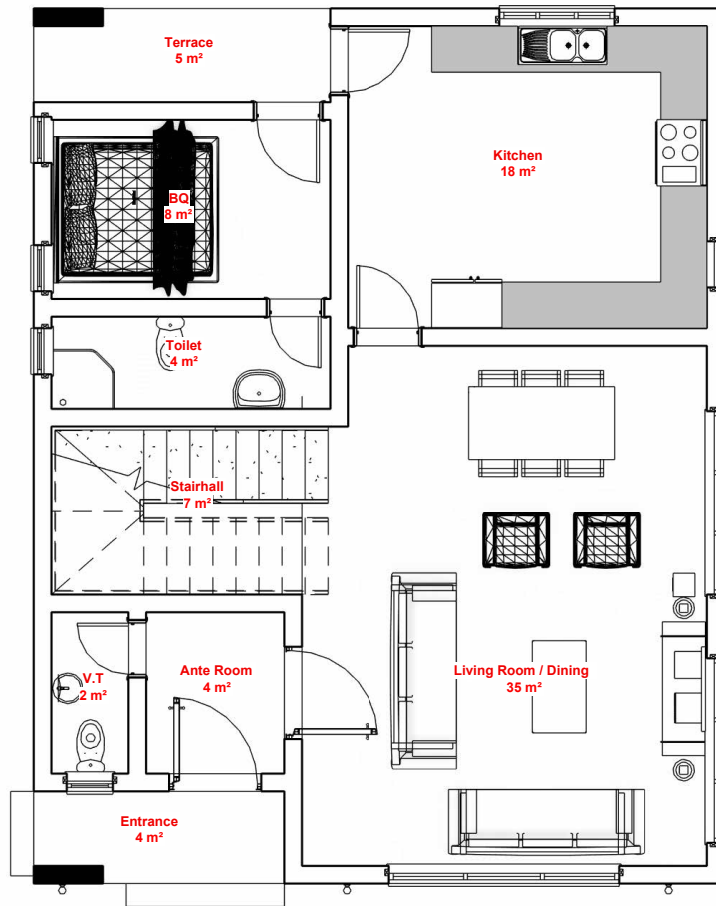
4 Bedroom Fully Detached Duplex

Experience the pinnacle of detached living with our 4-bedroom fully detached duplex. This home offers a perfect sanctuary with ample space and luxurious features.

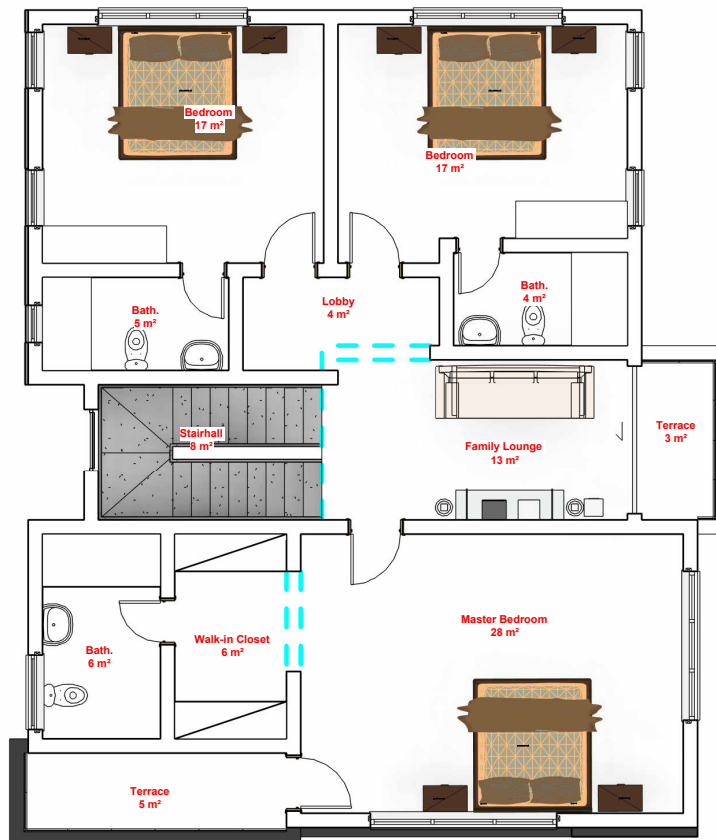
- Expansive Living Spaces: Generous rooms for relaxation and entertainment.
- State-of-the-Art Kitchen: For the culinary enthusiast.
- En-Suite Bedrooms: Lavish rooms with premium finishes.
- Private Garden and Parking: Your own outdoor oasis and secure parking.



300 SQMs



GROUND FLOOR



FIRST FLOOR

RAVEN

450 SQMs

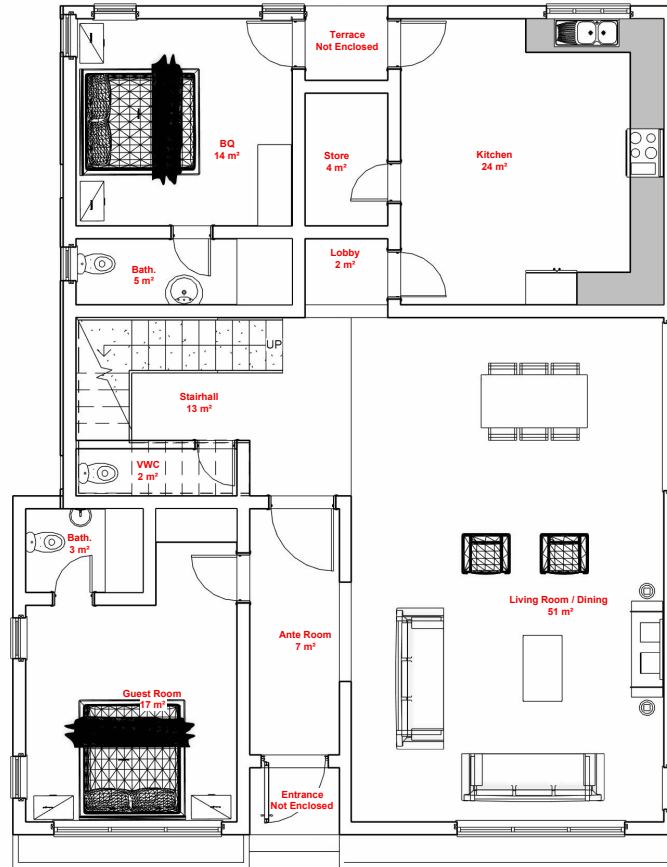
5 Bedroom Fully Detached Duplex

For those who seek grandeur and luxury, our 5-bedroom fully detached duplex provides an unparalleled living experience with top-tier amenities and exquisite finishes.

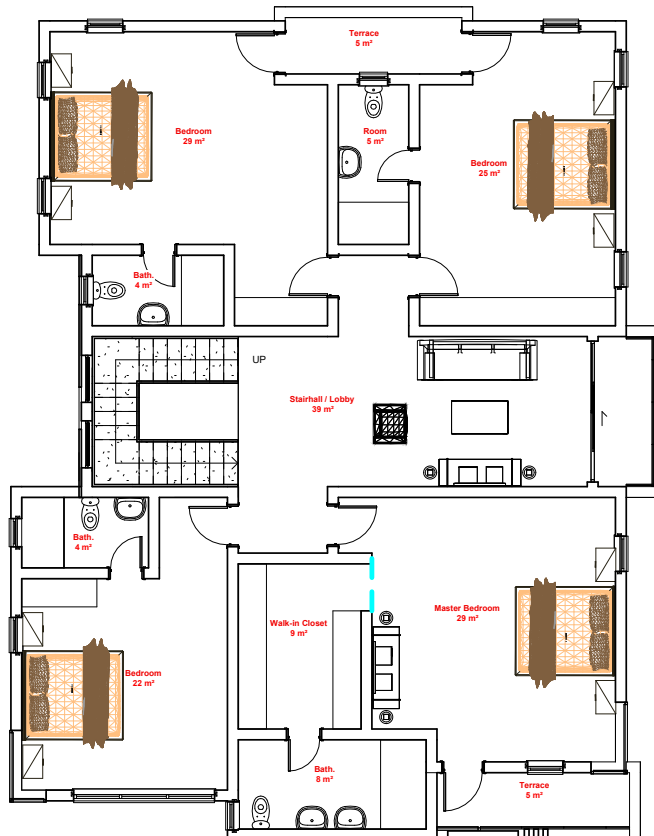
- Grand Living and Dining Areas: Perfect for hosting and family time.
- High-End Kitchen: A chef's dream with the latest appliances.
- Spacious En-Suite Bedrooms: Luxury and comfort in every corner.
- Private Garden and Multiple Parking Spaces: Plenty of room for outdoor activities and guests.



450 SQMs



GROUND FLOOR



FIRST FLOOR

EAGLE

750 SQMs

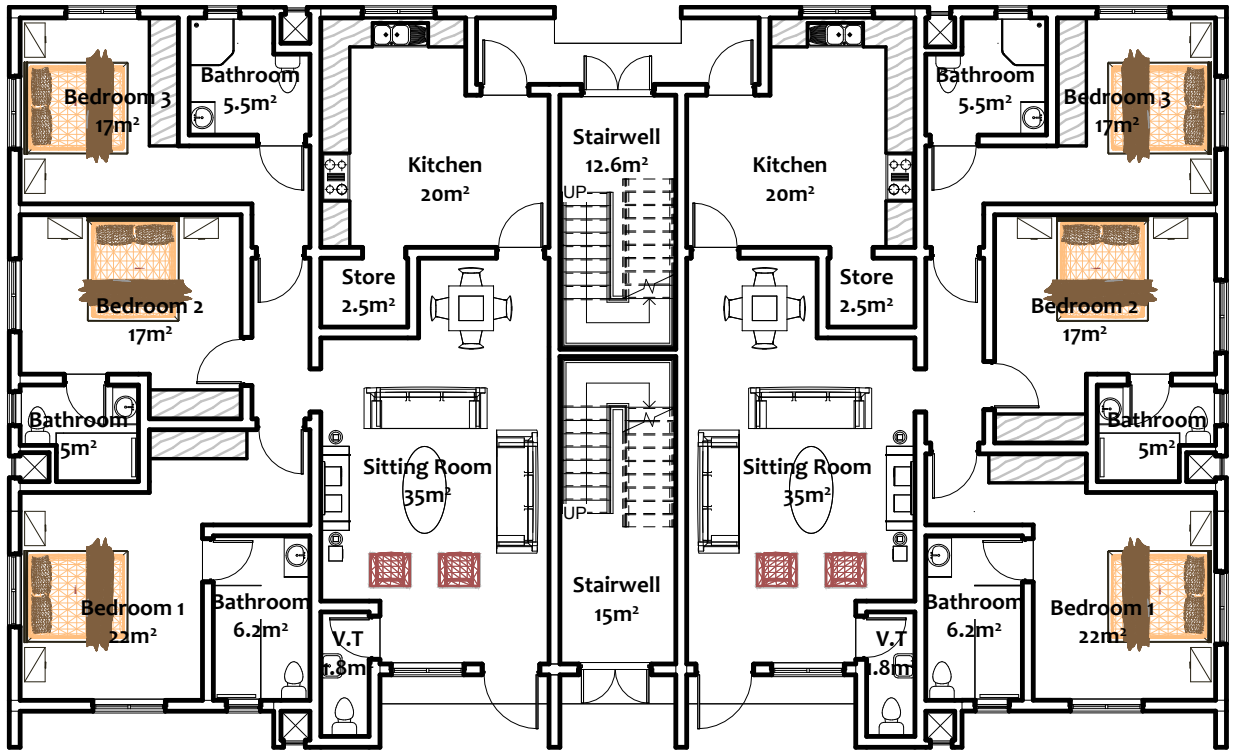
6 Units of 3 Bedrooms Block of Flats

Maximize your investment with our 6 units of 3-bedroom block of flats. Ideal for rental income, these units offer modern living in a community setting, making them perfect for investors and families alike.

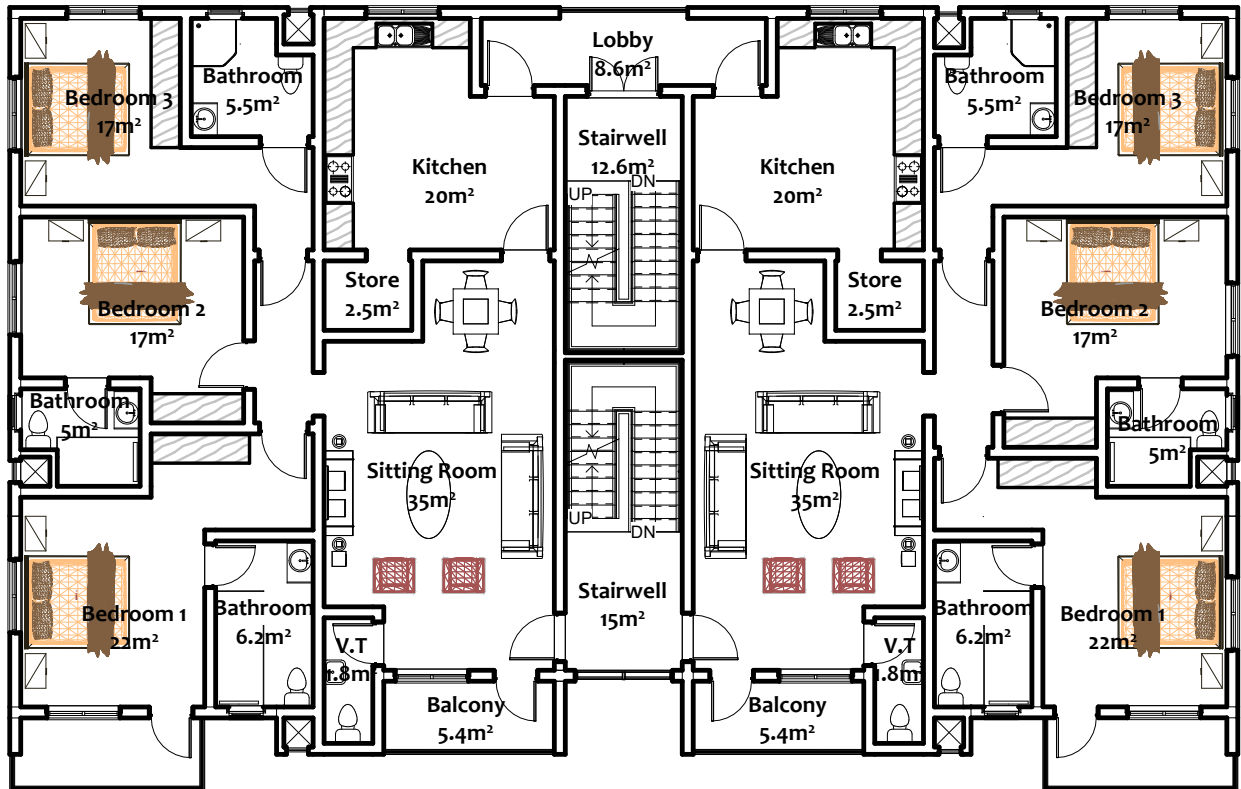
- Contemporary Living and Dining Areas: Designed for modern living.
- Modern Kitchens: Functional and stylish.
- En-Suite Bedrooms: Privacy and comfort for each resident.
- Dedicated Parking for Each Unit: Convenient and secure.



750 SQMs



GROUND FLOOR



FIRST FLOOR

Bringing Life To Living



NO. 8 Abdullahi Ibrahim Street, Utako FCT, Abuja  +234 905 055 6897 | 0818 644 5930

 info@edinandpeople.com  www.edinandpeople.com