

*Invest in Land*

# MILTON CITY

 *Karsana*



## PLOT SIZES

150 SQMs

250 SQMs

350 SQMs

450 SQMs

450 SQMs



# WELCOME HOME

An exclusive estate nestled in Karsana, Abuja. Milton City offers residents easy access to a myriad of recreational facilities and amenities, and boasts of four distinct house prototypes designed to cater to your every need and preference. Whether you're seeking a cozy retreat or a spacious family home, Milton City has the perfect option for you. Each prototype is meticulously crafted to maximize natural light and complement the serene surroundings of Karsana. Whether you're commuting to the city center, catching a flight from the international airport, or simply enjoying a day out with family and friends, everything you need is within reach.

Milton City offers a range of plot sizes to suit your lifestyle and preferences, including VIRGO – 150SQMs, LIBRA – 250SQMs, TAURUS – 350SQMs, ARIES – 450SQMs, and LEO – 950SQMs. Whether you're dreaming of a quaint garden or a sprawling backyard oasis, our estate provides the perfect canvas for you to create your ideal home. Every detail has been carefully curated to enhance your lifestyle, from the elegant architecture to the top-of-the-line amenities.



## MILTON CITY



# MILTON CITY

*The Perfect  
place for you*



# ESTATE FACILITIES



Perimeter Fence.



24/7 Hour Security.



Dedicated Transformer.



Commercial Area.



Asphalt Road Network.



Play Ground.



150 SQMs

# VIRGO

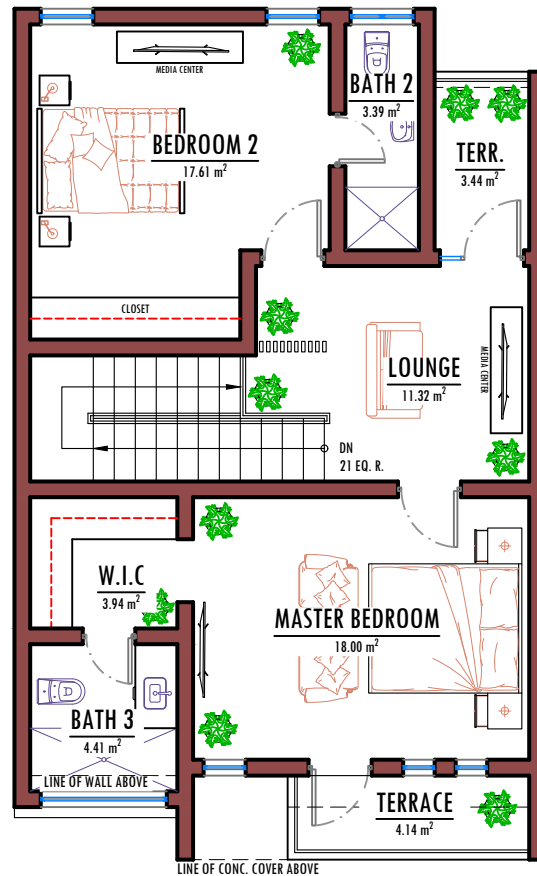
Nestled on a modest 150 square meters of land lies a charming 3-bedroom terrace duplex – The VIRGO, perfectly tailored for the discerning small family. This architectural gem boasts generous room proportions, ensuring every corner is utilized effectively without compromising on comfort. Crafted with functionality and affordability in mind, this residence is a testament to smart design and practicality.

Within this compact yet intelligently designed space, you'll find a masterfully appointed layout comprising three en-suite bedrooms, each providing sanctuary and privacy. The heart of the home encompasses a cozy living room, an inviting dining area, a welcoming foyer, and a convenient visitor's toilet. Additionally, a private lounge area offers a tranquil retreat for quiet evenings or intimate gatherings.





**GROUND FLOOR PLAN**  
FURNITURE LAYOUT



**UPPER FLOOR PLAN**  
FURNITURE LAYOUT

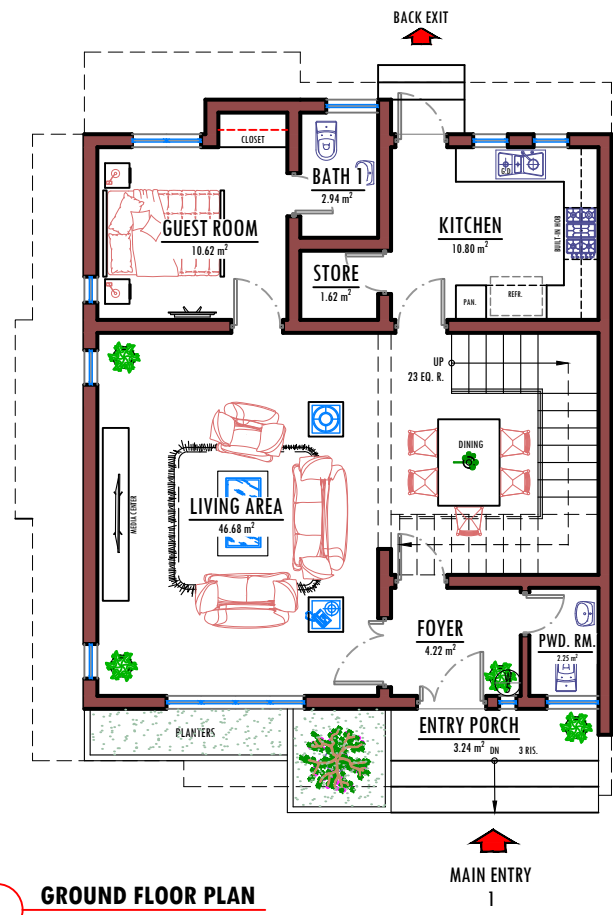
250 SQMs

# LIBRA

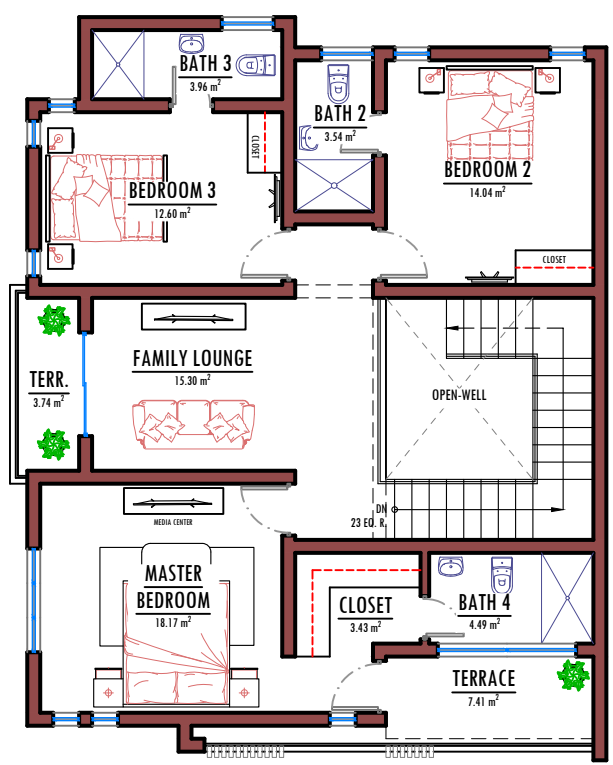
Emphasizing convenience, value creation, and fostering a sense of community living, The LIBRA presents an enticing option for both homebuyers and investors in search of an affordable and meticulously planned environment. Nestled on a 250 square meter plot, this property boasts of a 4 bedroom semi-detached duplex, securely enclosed within a fenced and gated perimeter.

This versatile canvas invites you to personalize your living space to reflect your unique tastes and preferences. The layout is thoughtfully designed to accommodate an array of amenities, including an all-en-suite Living room, Dining area, Foyer, Visitors' Toilet, and Family Lounge, seamlessly blending comfort with sophistication, and an ample space is provided for parking, with the capacity to accommodate up to three vehicles, ensuring practicality and convenience for residents and guests alike.





**GROUND FLOOR PLAN**  
FURNITURE LAYOUT



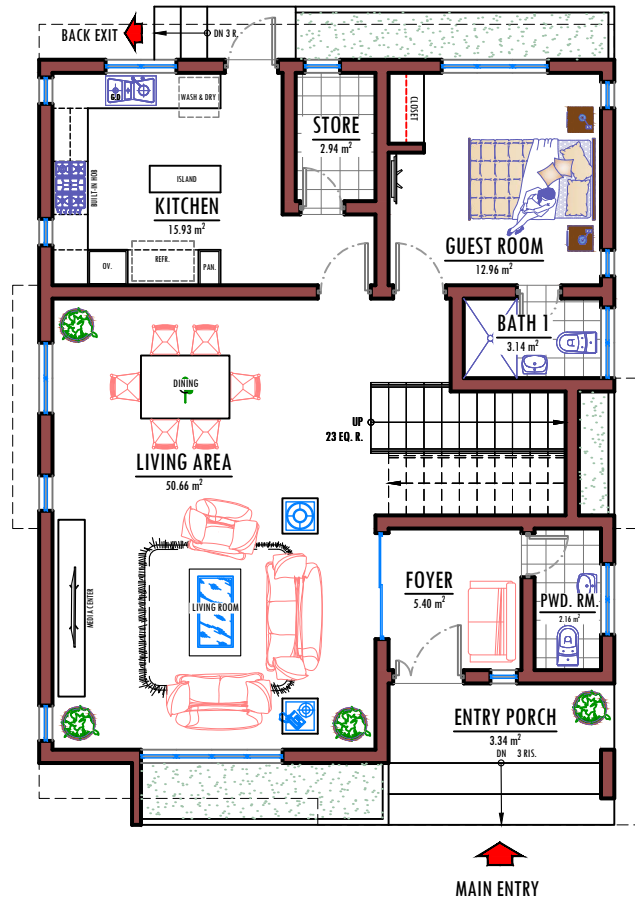
**UPPER FLOOR PLAN**  
FURNITURE LAYOUT



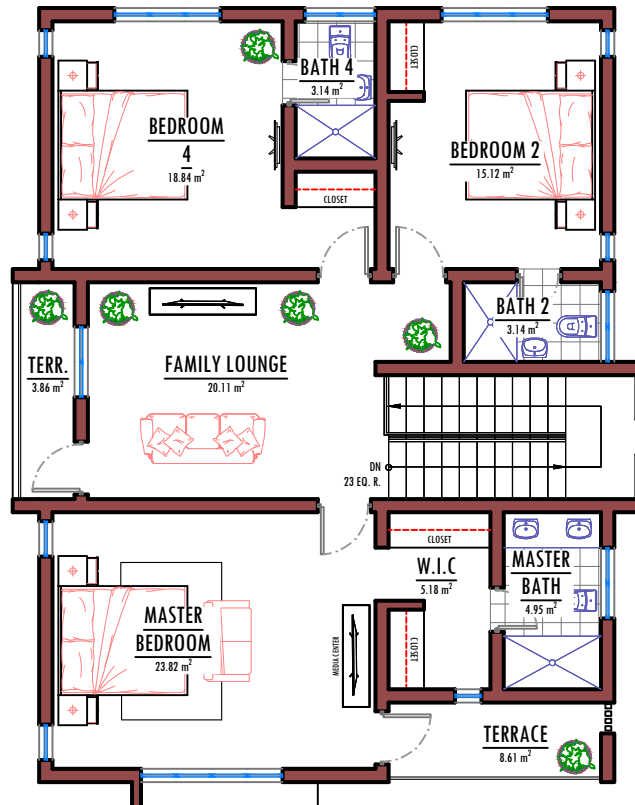
# TAURUS

TAURUS is an expansive 350-square-meter plot of land meticulously crafted to seamlessly blend functionality with visual allure. Within its bounds, there lies the potential to construct a luxurious, fully detached duplex boasting four bedrooms fully-detached. Enclosed within secure fencing and a gated entryway, this residence promises privacy and security. Each of the four bedrooms can be envisioned as a sanctuary, complete with its own en-suite bathroom, ensuring comfort and convenience for its occupants. The design incorporates essential spaces such as a spacious living room, dining area, welcoming foyer, and well-appointed kitchen, all strategically laid out to optimize flow and utility. Additionally, a family lounge area offers a cozy retreat for relaxation and leisure. Parking needs are generously catered to, with ample space provided for up to three vehicles, adding a practical dimension to the property. From its thoughtful layout to its attention to detail, this land holds the promise of creating a harmonious blend of practical living and aesthetic appeal.





**GROUND FLOOR PLAN**  
FURNITURE LAYOUT



**UPPER FLOOR PLAN**  
FURNITURE LAYOUT

450 SQMs

# ARIES

ARIES is a meticulously designed 450-square-meter plot of land, perfect for constructing a luxurious, fully detached duplex with five bedrooms.

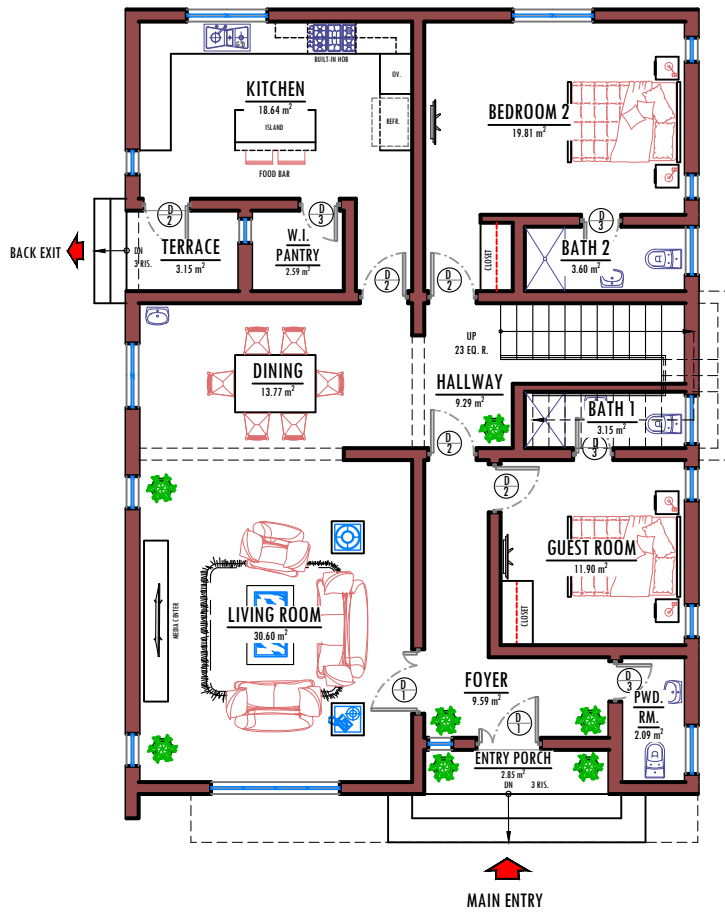
Enclosed within secure fencing and a gated entryway, ARIES promises privacy and security.

Each bedroom features its own en-suite bathroom, ensuring comfort and convenience.

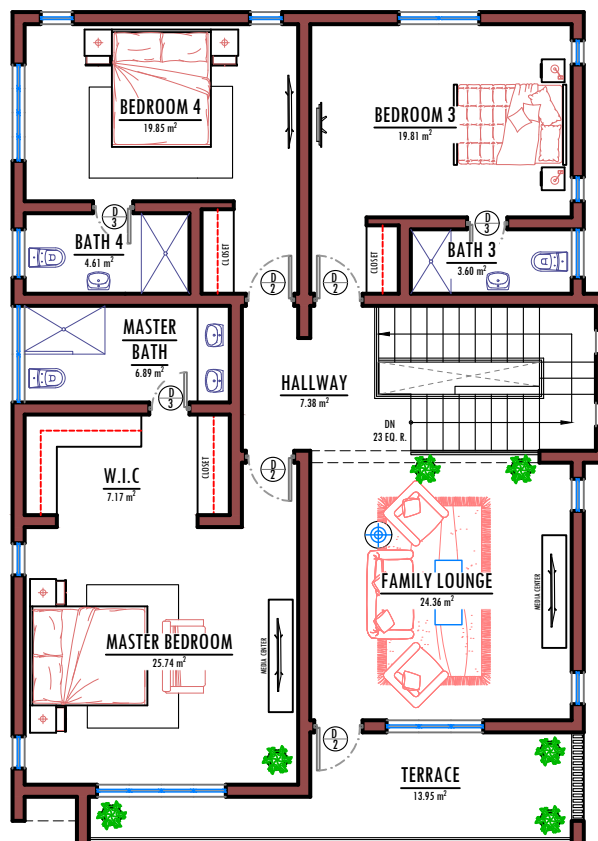
With essential spaces like a spacious living room, dining area, well-appointed kitchen, and a family lounge area, ARIES offers both functionality and aesthetic appeal.

Spacious parking space for up to four vehicles adds practicality to this harmoniously designed property.





**GROUND FLOOR PLAN**  
FURNITURE LAYOUT



**UPPER FLOOR PLAN**  
FURNITURE LAYOUT

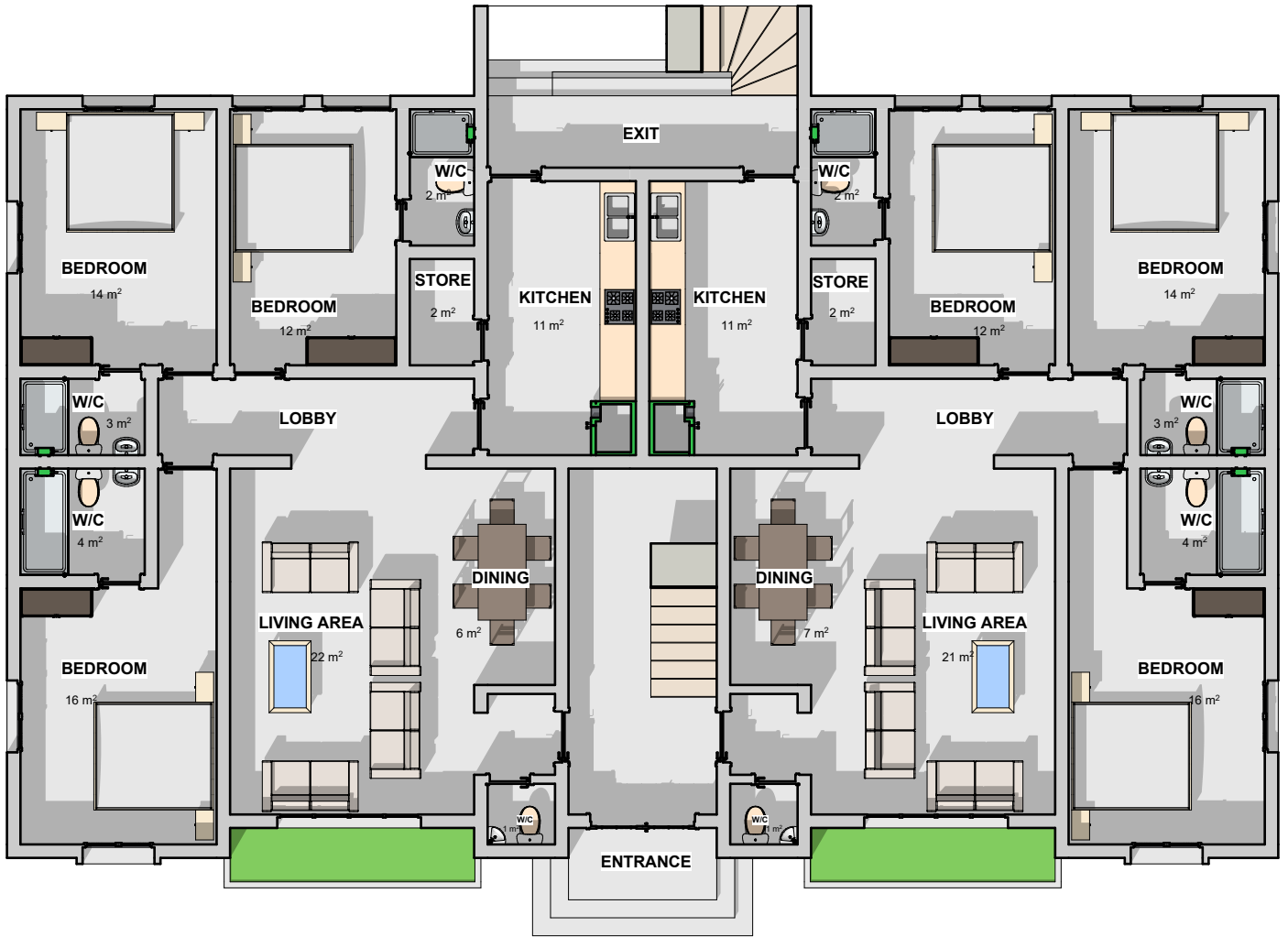
## LEO

LEO is an expansive 950-square-meter plot of land designed for grandeur and luxury. This spacious plot offers ample room to construct an opulent 6 unit of 3 bedroom apartment, boasting. Enclosed within secure fencing and a gated entryway, LEO ensures privacy and security. Each bedroom is designed as a lavish sanctuary, complete with its own en-suite bathroom, ensuring comfort and convenience for its occupants.

The design includes essential spaces such as a grand living room, formal dining area, welcoming foyer, and a well-appointed kitchen, all strategically laid out to optimize flow and utility. Additionally, a family lounge area offers a cozy retreat for relaxation and leisure.

Parking needs are generously catered to, with ample space provided for up to seven vehicles, adding a practical dimension to the property. From its thoughtful layout to its attention to detail, LEO promises to create a harmonious blend of practical living and aesthetic appeal on a grand scale





# Planting Seeds of Wealth...



*Bringing Life To Living*



NO. 8 Abdullahi Ibrahim Street, Utako FCT, Abuja  +234 905 055 6897 | 0818 644 5930

 [info@edinandpeople.com](mailto:info@edinandpeople.com)  [www.edinandpeople.com](http://www.edinandpeople.com)