

# GREY PACIFIC

## ESTATE

by

**Edin&people**

REAL ESTATE | INVESTMENT | PROJECT MANAGEMENT

*Bringing Life to Living*



*Welcome Home*

# GREY PACIFIC

Nestled in Lifecamp-Extension, alongside Paradise Estate 2 and near Brains and Hammers, The Grey Pacific Estate offers easy access to Jabi Lake Mall, Jabi Boat Club, and other popular recreational centres. Enjoy breathtaking landscapes and a wellconnected road network. At Grey Pacific Estate, you'll find the perfect balance of convenience and natural beauty. Our apartments are designed to maximize natural light and complement the lush surroundings. With proximity to the international airport, city centre, and local amenities, our location provides unmatched convenience. Experience the epitome of luxury living at Grey Pacific Estate. With our exclusive gated community of 124 private residences, you'll enjoy privacy, prestige and a closely knitted community where you can nurture and grow your family.

Still available are; 150sqm, 250sqm, 450sqm, 750sqm. Immerse yourself in a world of elegance, where every detail has been carefully curated to enhance your lifestyle. Join us at Grey Pacific Estate, where luxury, convenience, and sophistication converge to create your dream home in Lifecamp Abuja.

## BASIC ESTATE FACILITIES



Green Area/  
Manicured Lawns



Worship Centers



Sports Complex /  
Fitness Center



CCTV Security and  
Surveillance Systems  
& Police Outpost



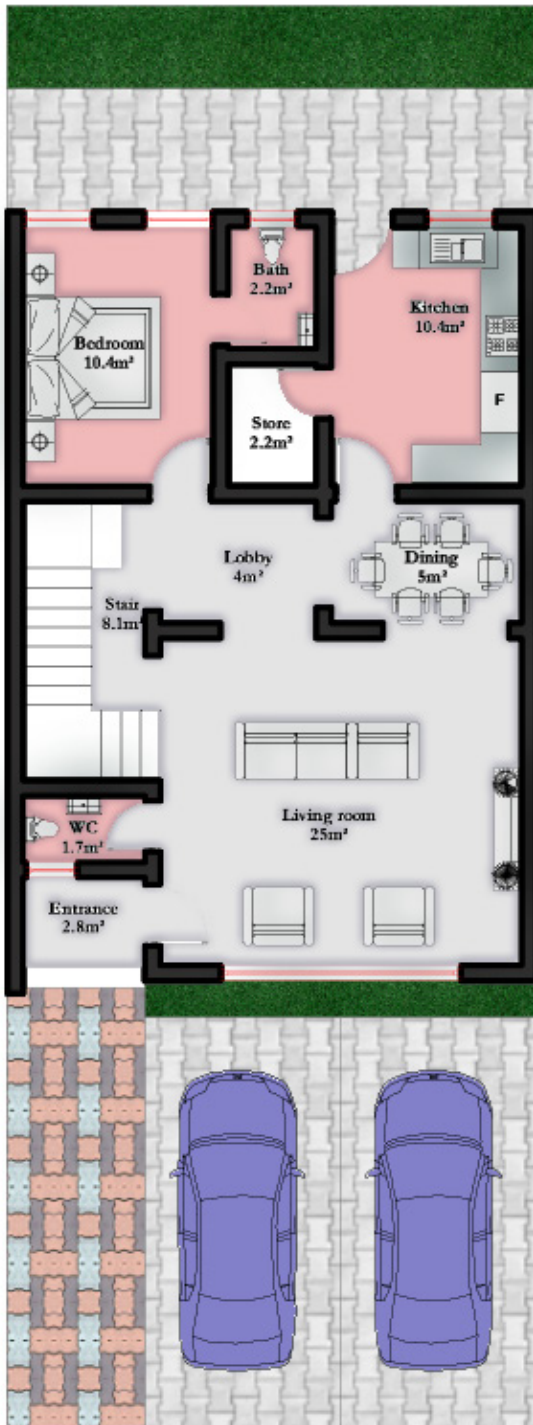
# ORION

This compact 150 square meter land accommodates a 3 Bedroom terrace duplex which is an ideal house for a small family, with ample room spaces, fully functional, yet cost-effective to build. On this land, a 3 Bedroom all en-suite room, including a Living room, Dining, Foyer, Visitor's Toilet and a Private Lounge space is achievable. That "happily ever after" life happens here.

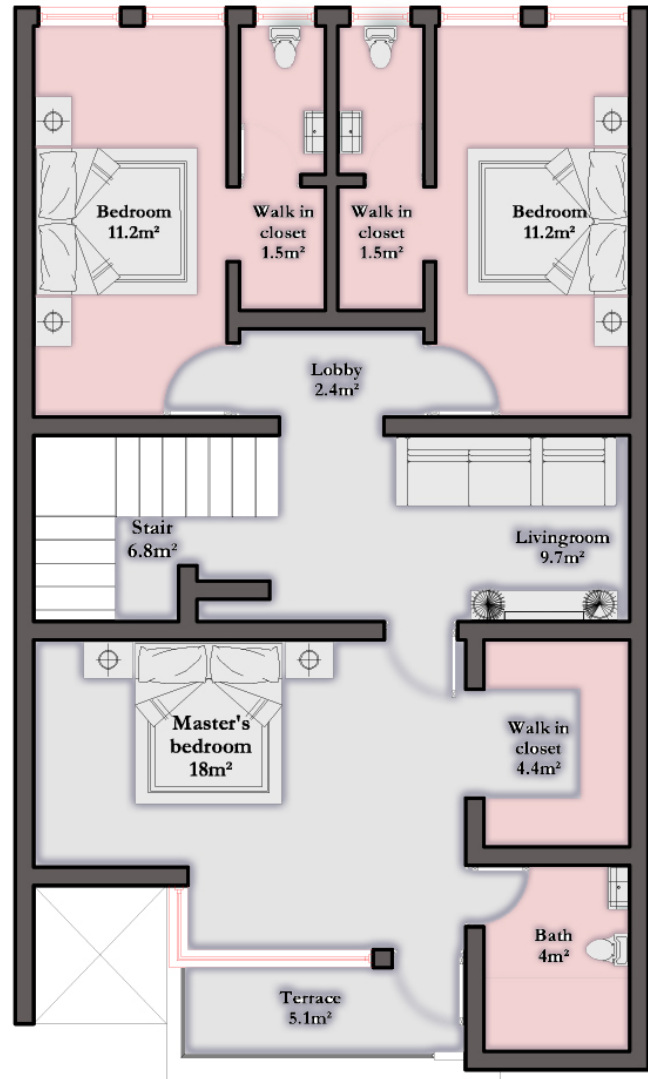
150SQM







Ground Floor Plan



First Floor Plan

# GEMINI

With a focus on convenience, value creation and community living, The GEMINI is an ideal choice for buyers and investors seeking an affordable and well-planned topography. This 250 square meter land accommodates a fenced and gated 4 Bedroom fully detached duplex. You can paint this canvas to your taste as it is capable of accommodating an all en-suite Living room, Dining, Foyer, Visitors' Toilet and Family Lounge areas, all tailored to give you the most desired comfort and opulence. This land allows room for a 3 car parking space.

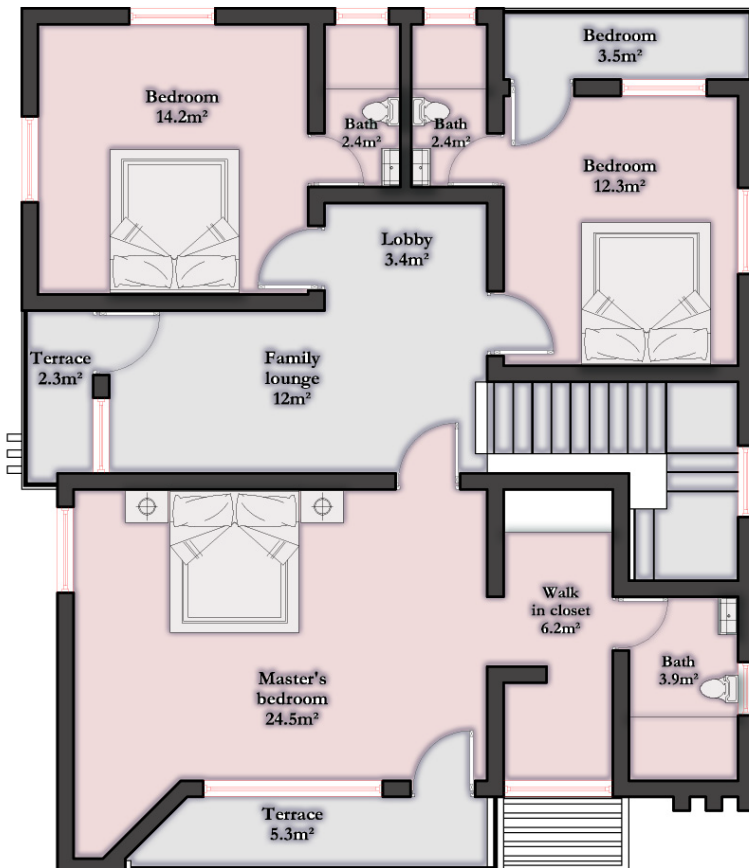
250SQM







Ground Floor Plan



First Floor Plan

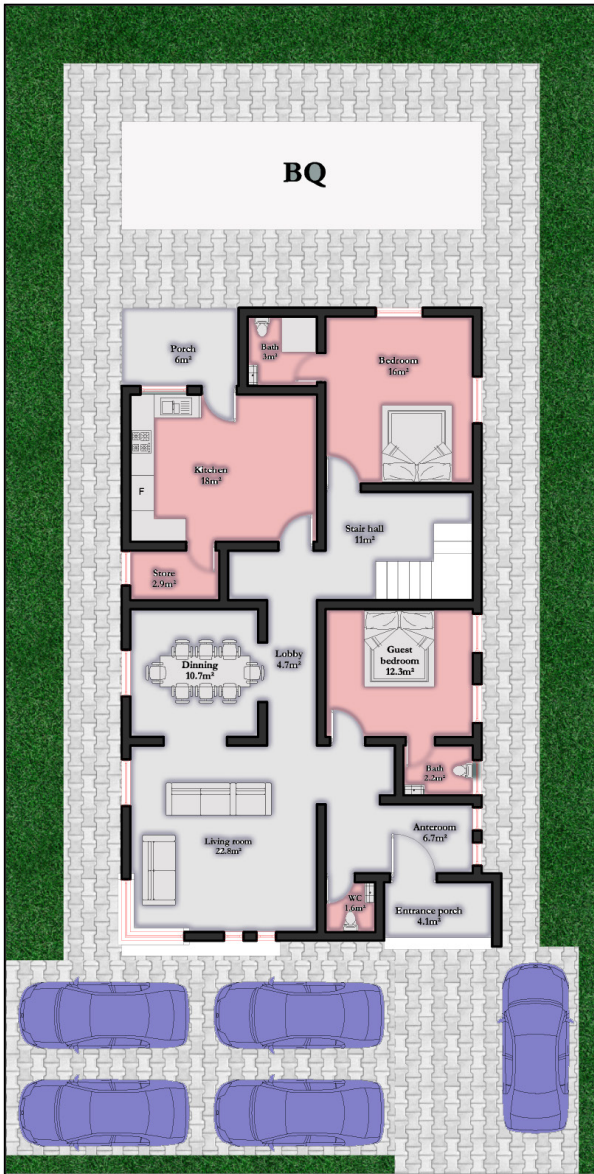


# DRACO

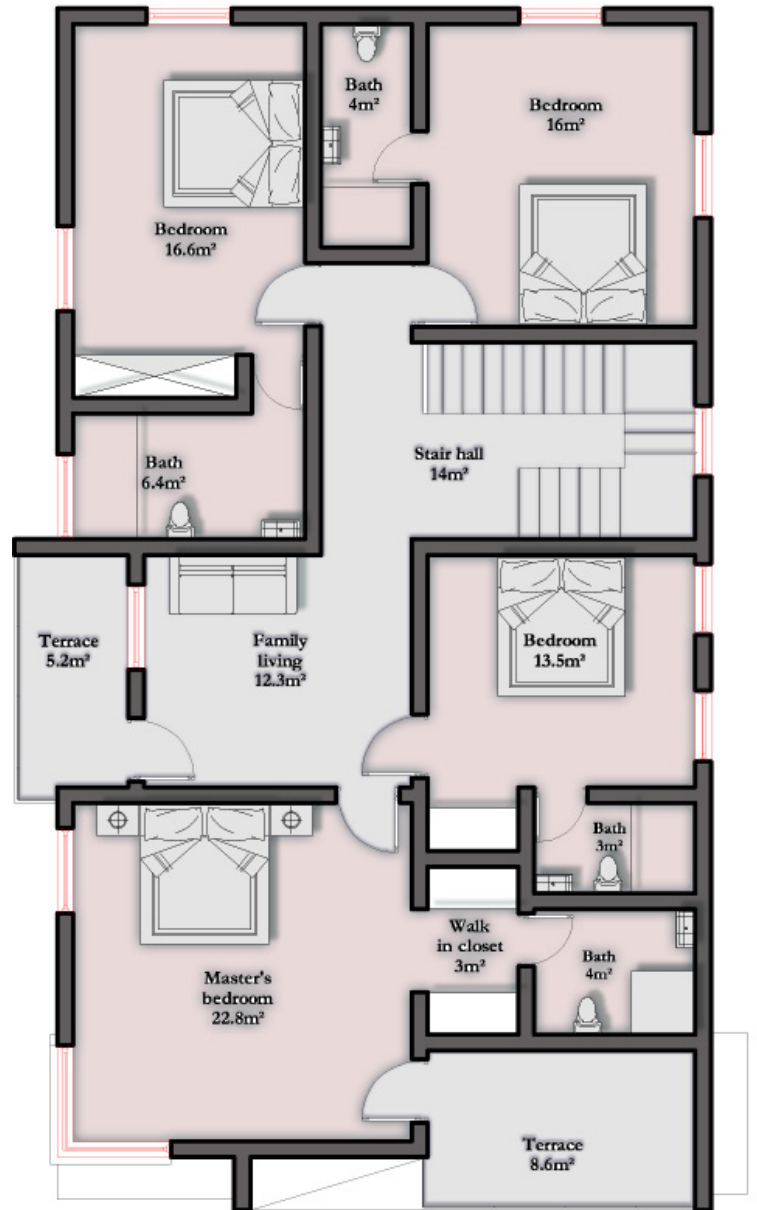
With its size slightly bigger than a standard NBA Basket Ball Court, every square inch of this 450 square meter land is designed to build in functionality and create aesthetic appeal. This land can accommodate a 5 Bedroom fully detached duplex that is fully fenced and gated. This 5 Bedroom can be all en-suite with Living room, Dining, Foyer, Visitors' Toilet, Kitchen, Family Lounge spaces and a parking space for 5 cars.

450SQM





Ground Floor Plan



First Floor Plan



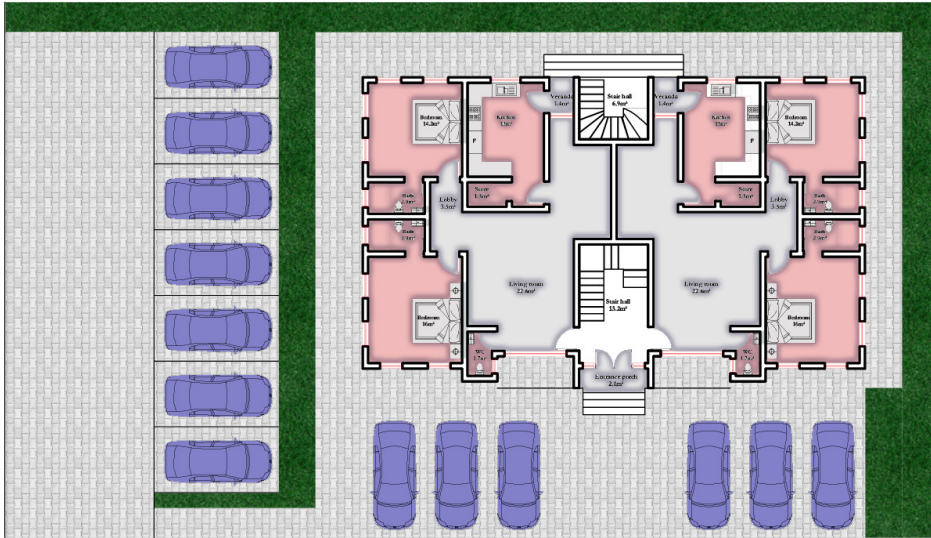
# LEO

With 750 square meter, LEO offers 6 units of two bedrooms blocks of flat that is opulent by birth and accords a splendid view. On this land, you can have an all en-suite Living room, Dining and Finely-Proportioned windows, Foyer, Visitors' Toilet, Kitchen, with exquisite details and finishing, and at least two car parking spaces, all geared towards giving you the desired amount of personality while offering a unique experience to an interesting lifestyle upgrade.

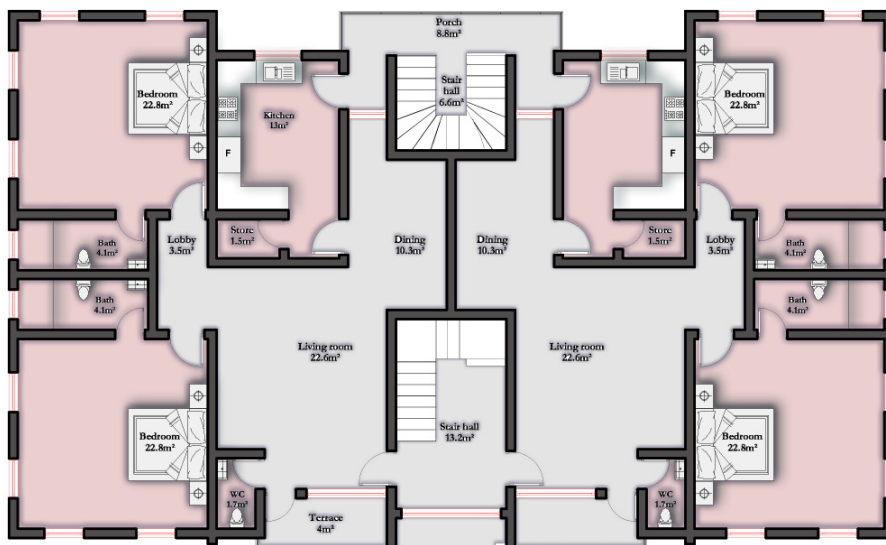
750SQM



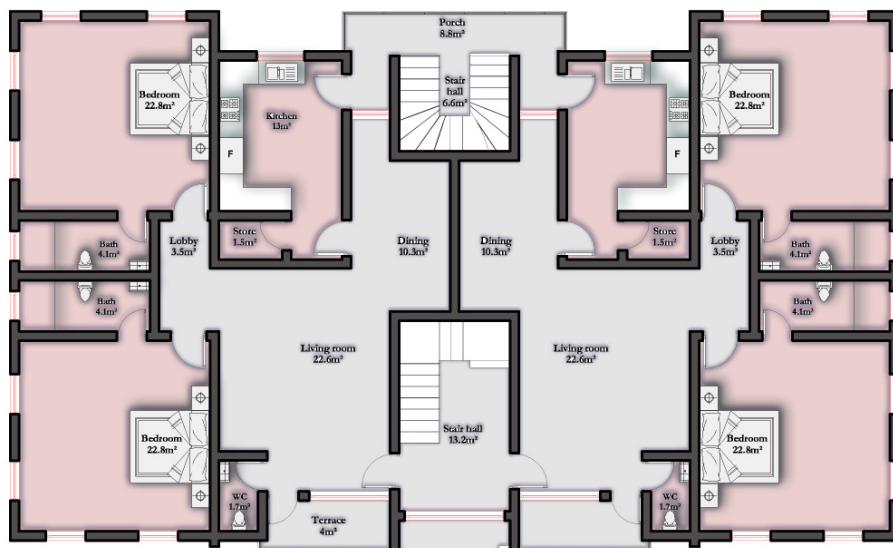




Ground Floor Plan





First Floor Plan



Ground Floor



REAL ESTATE | INVESTMENT | PROJECT MANAGEMENT

 NO. 8 Abdullahi Ibrahim Steet, Utako FCT, Abuja  +234 905 055 6897 | 0818 644 5930

 [info@edinandpeople.com](mailto:info@edinandpeople.com)  [www.edinandpeople.com](http://www.edinandpeople.com)