

# UNION HIVE

## Lifecamp Ext.

*The good things in Abuja you don't know exist*

*by*

**Edin&people**

REAL ESTATE | INVESTMENT | PROJECT MANAGEMENT

*Bringing Life to Living*



*Welcome Home*

## **UNION HIVE**

Welcome to The Union Hive Estate by Edin&People, where community, connections and wellbeing meets fine living. Here is your ticket to affordable urban living in Abuja.

The Union Hive Estate is an exclusive property by Edin&People siting on an 8 hectare land in a serene environment- Life Camp Extension, F.C.T Abuja. This estate offers a dazzling array of 4 different land sizes and prototypes, all geared to provide a delightful and an awe-inspiring scenery. At Union Hive, we offer lands with sizes 150 sqm, 250 sqm, 450 sqm and 750 sqm with amazing topography and excellent drainage system.

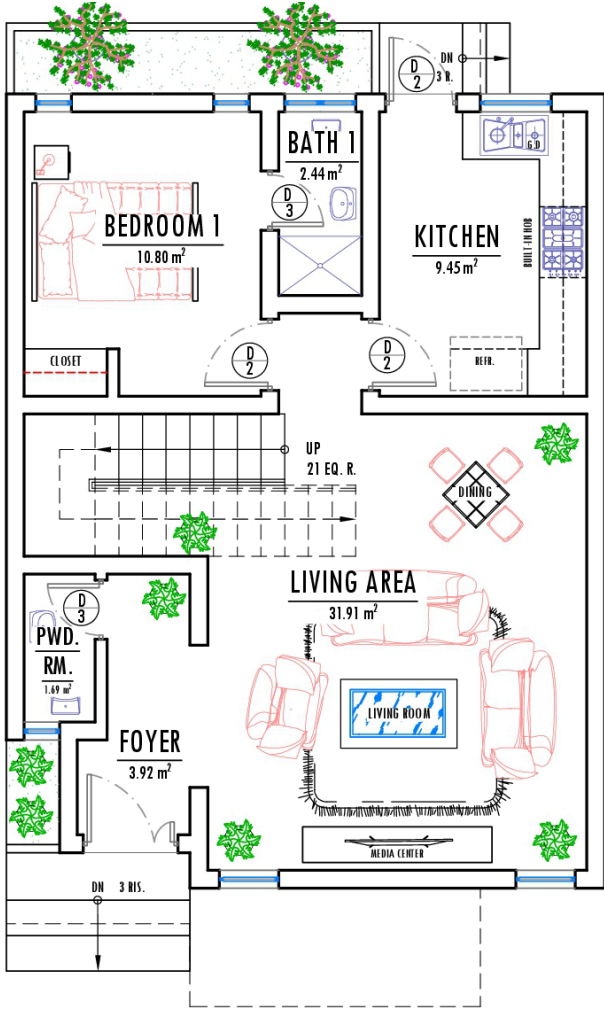
The Union Hive Estate has a close proximity to Nnamdi Azikiwe International Airport, A shopping Mall and A Landscaped Recreational Area. Modeled with amenities that will guarantee serenity, security, comfort, and wellness, from the pedestrian walkway along all streets, to solar street lights, CCTV surveillance & security, and intercom, this project from conceptualization has you at heart. With a contemporary design touch and elegance, you are assured of exquisite design functionality and ease of construction.

# NOBLE

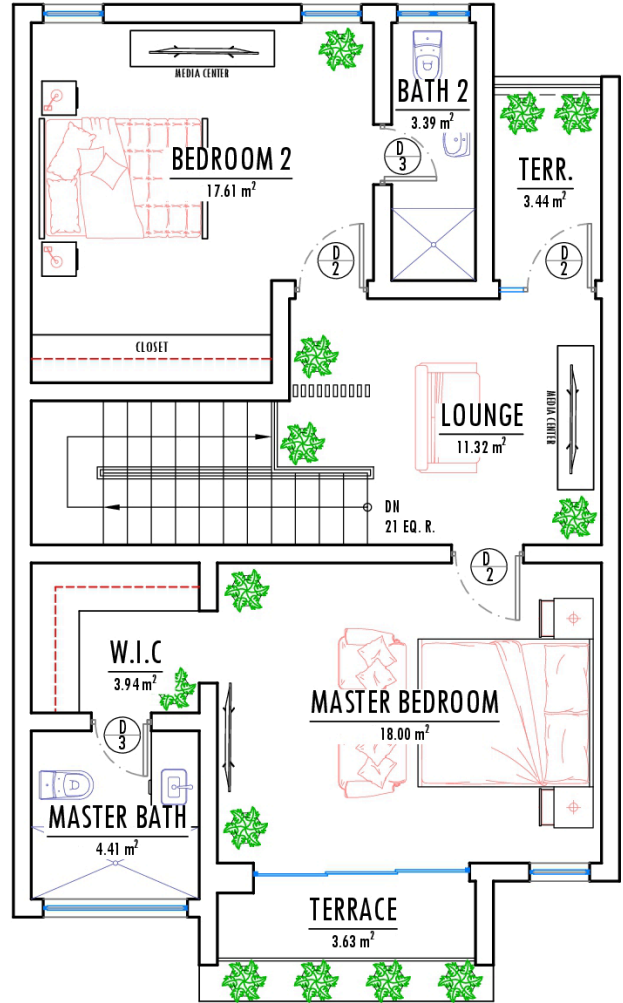
This compact 150 square meter land accommodates a 3 Bedroom terrace duplex which is an ideal house for a small family, with ample room spaces, fully functional, yet cost-effective to build. On this land, a 3 Bedroom all en-suite room, including a Living room, Dining, Foyer, Visitor's Toilet and a Private Lounge space is achievable. That "happily ever after" life happens here.

150SQM

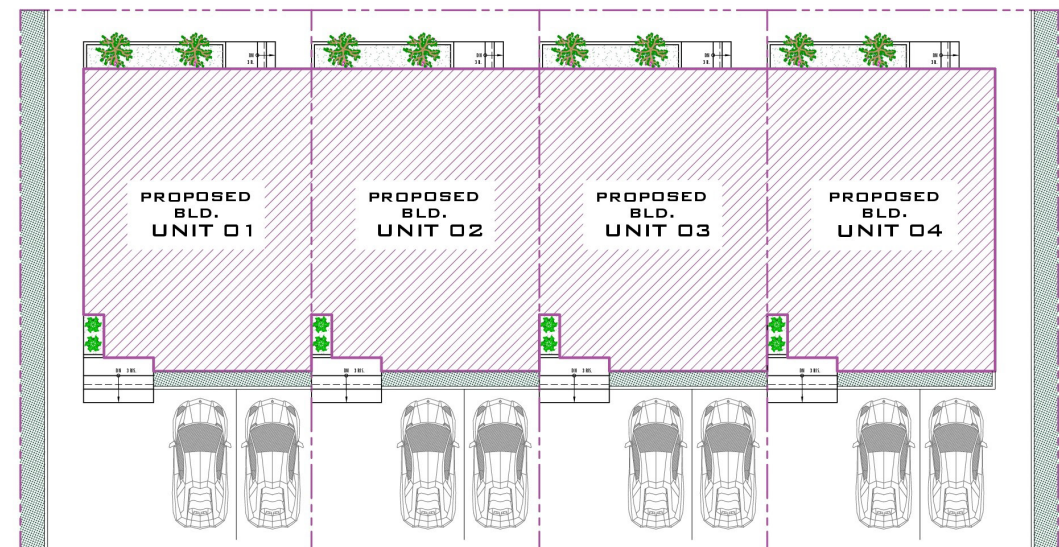




Ground Floor Plan



First Floor Plan



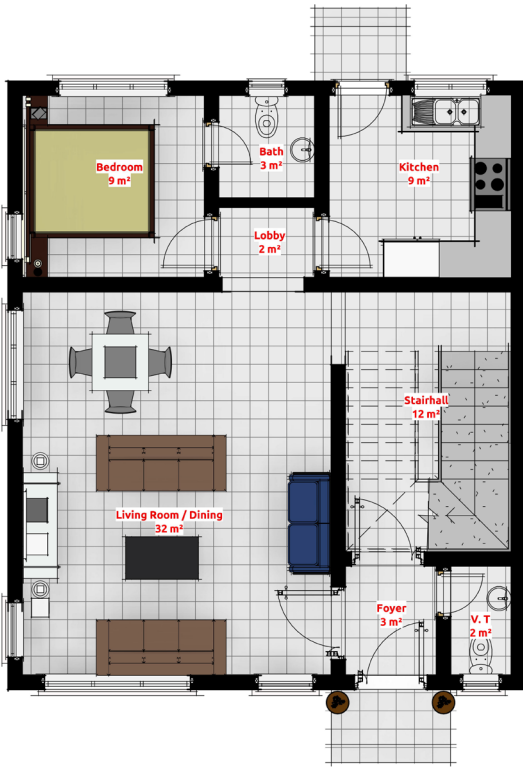
Site Plan

# CROWN

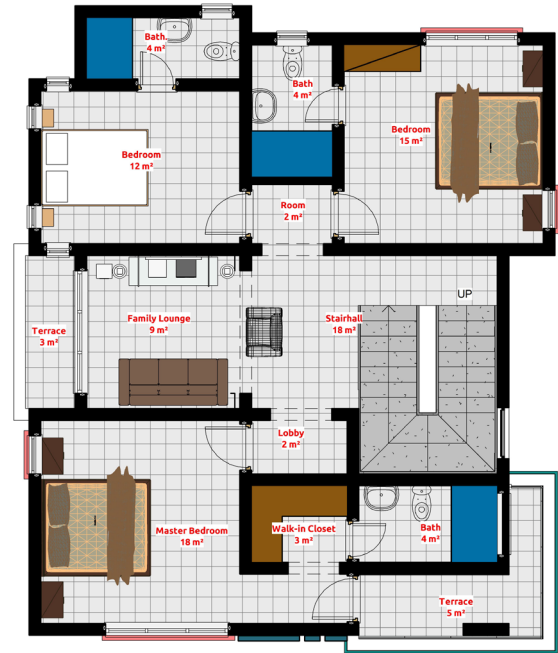
With a focus on convenience, value creation and community living, CROWN is an ideal choice for buyers and investors seeking an affordable and well-planned topography. This 250 square meter land accommodates a fenced and gated 4 Bedroom fully detached duplex. You can paint this canvas to your taste as it is capable of accommodating an all en-suite Living room, Dining, Foyer, Visitors' Toilet and Family Lounge areas, all tailored to give you the most desired comfort and opulence. This land allows room for a 3 car parking space. You can call it a home but this canvas can be your Mini Palace.

250SQM

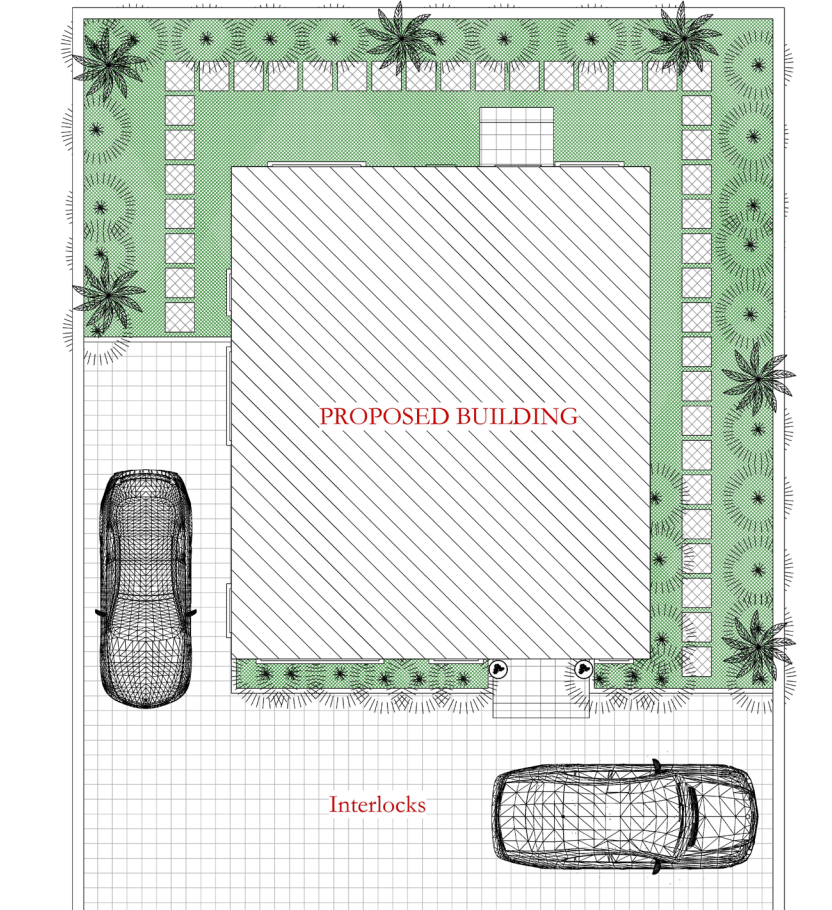




Ground Floor Plan



First Floor Plan



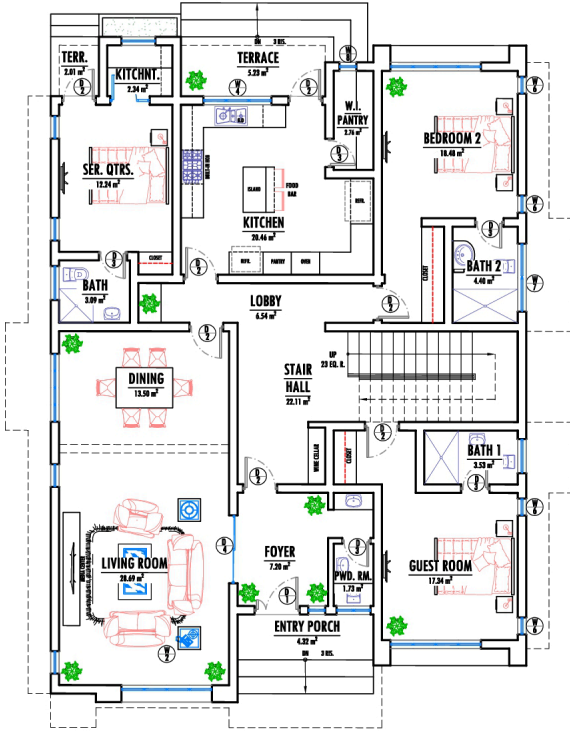
Site Plan

# REGENT

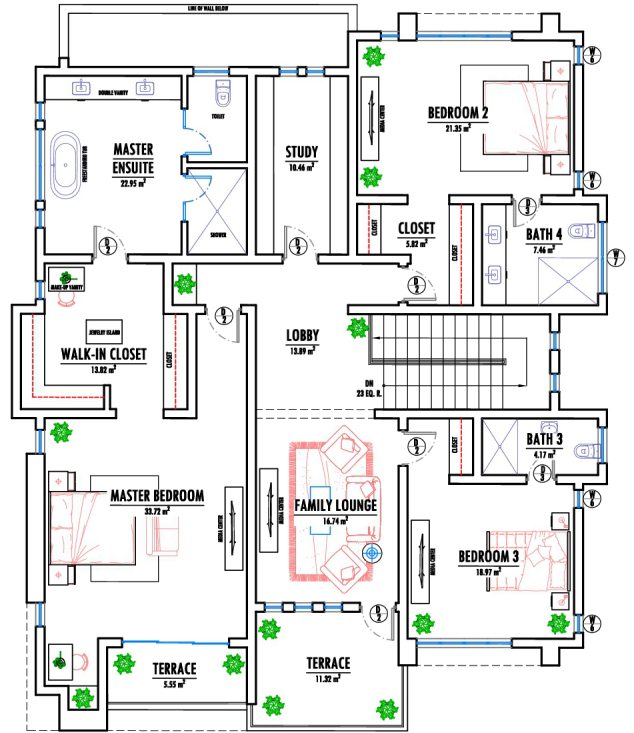
With its size slightly bigger than a standard NBA Basket Ball Court, every square inch of this 450 square meter land is designed to build in functionality and create aesthetic appeal. This land can accommodate a 5 Bedroom fully detached duplex that is fully fenced and gated. This 5 Bedrooms can be all en-suite with Living room, Dining, Foyer, Visitors' Toilet, Kitchen, Family Lounge spaces and a parking space for 5 cars. Indeed, you will be living on as a Regent on This Land.

————— 450SQM —————



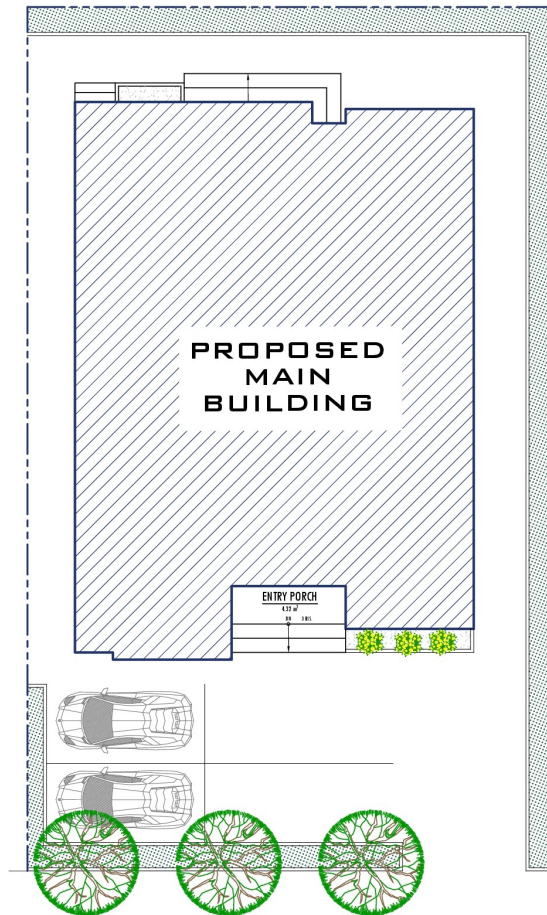


Ground Floor Plan



First Floor Plan

Site Plan



ACCESS ROAD

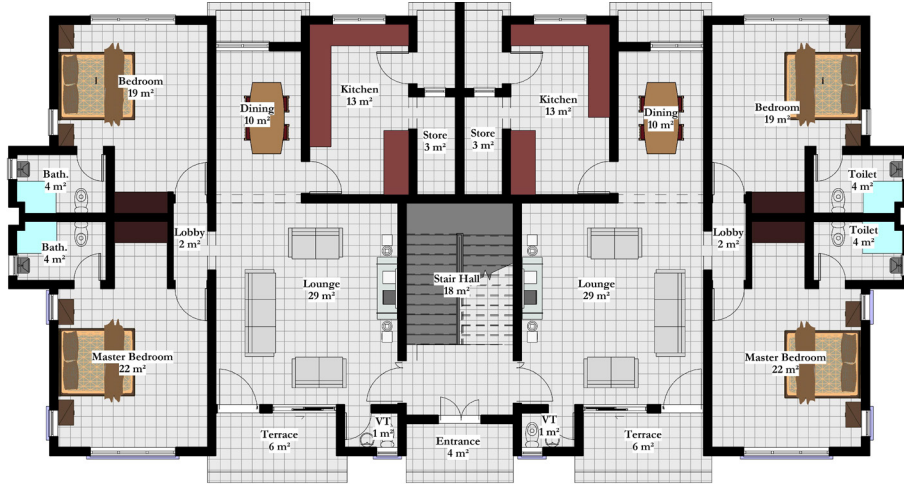


# KING'S FLAT

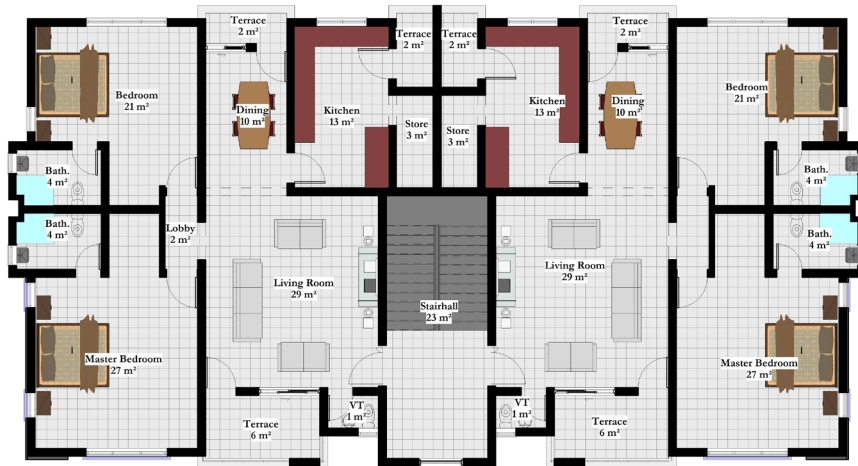
This land will make you feel like a King in his Palace. With 750 square meter, The KING'S FLAT offers 6 units of two bedrooms blocks of flat that is opulent by birth and accords a splendid view. On this land, you can have an all en-suite Living room, Dining and Finely-Proportioned windows, Foyer, Visitors' Toilet, Kitchen, with exquisite details and finishing, and atleast two car parking spaces, all geared towards giving you the desired amount of personality while offering a unique experience to an interesting lifestyle upgrade.

750SQM





**Ground Floor Plan**



**First Floor Plan**



**Site Plan**

## BASIC ESTATE FACILITIES



Green Area/  
Manicured Lawns



Worship Centers



Sports Complex /  
Fitness Center



CCTV Security and  
Surveillance Systems  
& Police Outpost



REAL ESTATE | INVESTMENT | PROJECT MANAGEMENT

📍 NO. 8 Abdullahi Ibrahim Steet, Utako FCT, Abuja    📞 +234 905 055 6897 | 0818 644 5930

🌐 [info@edinandpeople.com](mailto:info@edinandpeople.com)    📧 [www.edinandpeople.com](http://www.edinandpeople.com)