



REAL ESTATE | INVESTMENT | PROJECT MANAGEMENT

INVEST IN LAND

Solaris Court

 Lifecamp

Land Sizes

150M²

200M²

300M²

450M²

750M²

WELCOME HOME

Nestled in the serene environs of Life camp, Solaris Court is a premier residential community that blends modern luxury with natural beauty. Developed by Edin and People Limited, this premier estate offers a harmonious blend of modern architecture, serene environment, and a vibrant community lifestyle, designed to cater to your every need, providing comfort, elegance, and convenience in every corner.

Additionally, this jewel offers a range of premium amenities to ensure a comfortable and vibrant lifestyle for all residents.

Enjoy the best in modern living

24/7 Security

Peace of mind with round-the-clock protection

Paved Roads and Walkways

Beautifully landscaped and well-maintained.

Landscaped Gardens

Green spaces for relaxation and play.

Recreational Areas

Perfect for family activities and leisure.

Shopping and Retail Centers

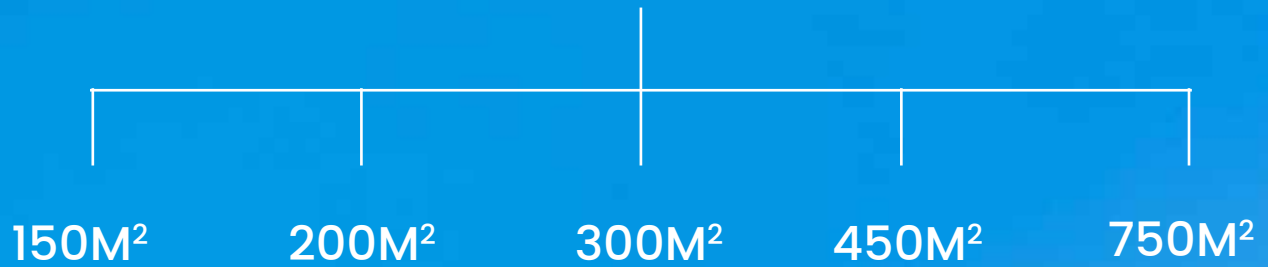
Convenient access to daily essentials

Schools and Healthcare Facilities

Solaris Court enjoys excellent connectivity to major parts of Abuja. The strategic location ensures residents have easy access to:

- Central Business District: Quick commute to work and business hubs.
- Airports: Convenient travel for business and pleasure.
- Major Highways: Seamless connectivity to the rest of the city.
- Recreational and Entertainment Hubs: Enjoy the best of Abuja's vibrant culture.

LAND SIZES



- ✓ 24 Hours Security
- ✓ Perimeter Fence
- ✓ Accessibility
- ✓ Playground for Kids
- ✓ Proximity to Amenities
- ✓ Value Proposition

150SQMs

Lieutenant

Ideal for a Cozy, Efficient Living Space:

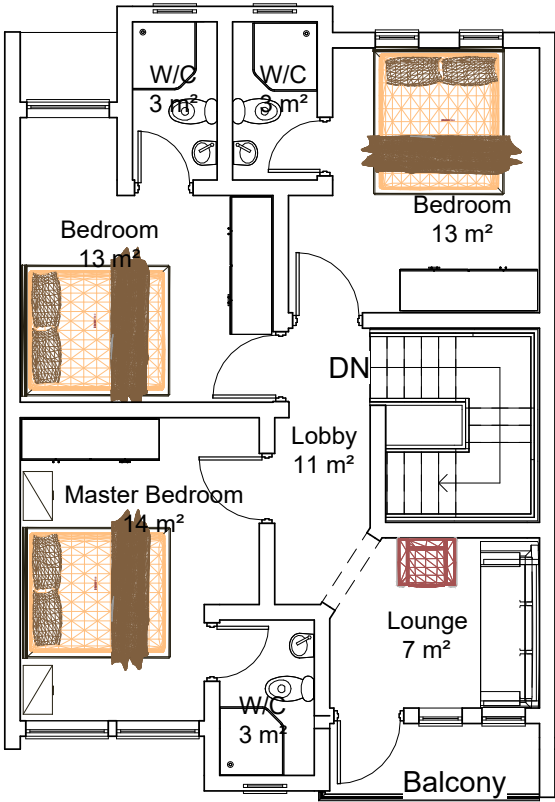
The Lieutenant plot size offers a compact yet luxurious footprint, perfect for a 3-bedroom terrace duplex. Designed with modern living in mind, this unit emphasizes space efficiency without sacrificing comfort.

Each terrace comes with carefully crafted interiors, allowing ample room for family gatherings, cozy retreats, and personal relaxation areas.

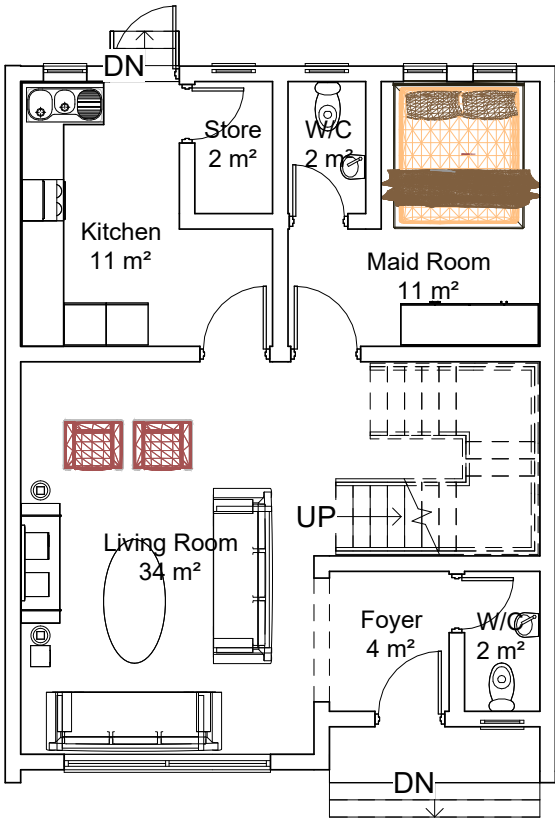
Living in Solaris Court means access to a community with 24/7 security, perimeter fencing, and quick access to amenities, making this an ideal choice for young families or professionals looking for a stylish, low-maintenance home in the heart of Lifecamp.



150SQMs



First Floor Plan



Ground Floor Plan

200SQMs

Major

A Versatile Space for Growing Families:

The Major plot size, accommodating a 4-bedroom semi-detached duplex, is the perfect blend of space and convenience.

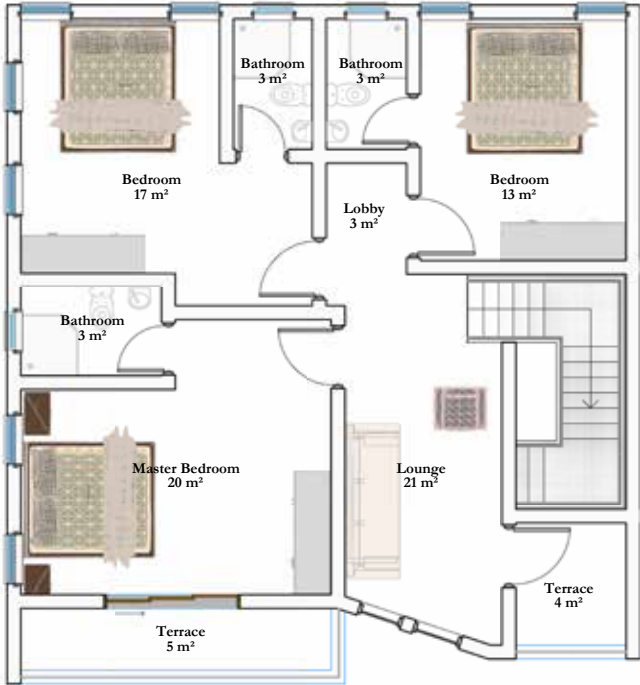
Each duplex in this category boasts open floor plans, spacious bedrooms, and private outdoor areas designed to give residents a sense of tranquility and connection to nature.

This plot provides more room to expand and is ideal for growing families who desire a bit more space.

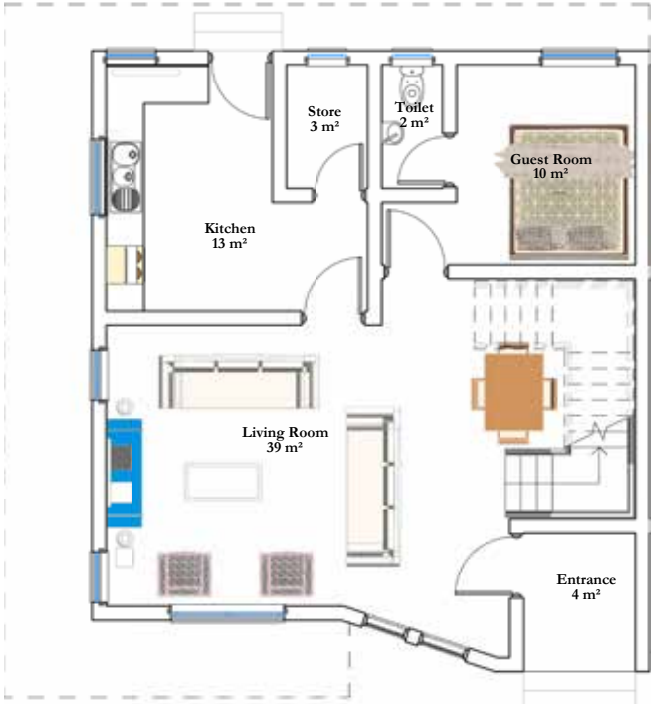
Located within the secure boundaries of Solaris Court, residents will enjoy playgrounds, well-manicured common areas, and proximity to essential amenities, ensuring a well-rounded living experience.



200SQMs



First Floor



Ground Floor

300SQMs

Captain

Luxury and Independence with Ample Space:

For those seeking a blend of independence and spacious living, the Captain plot at Solaris Court is ideal, supporting a 4-bedroom fully detached duplex.

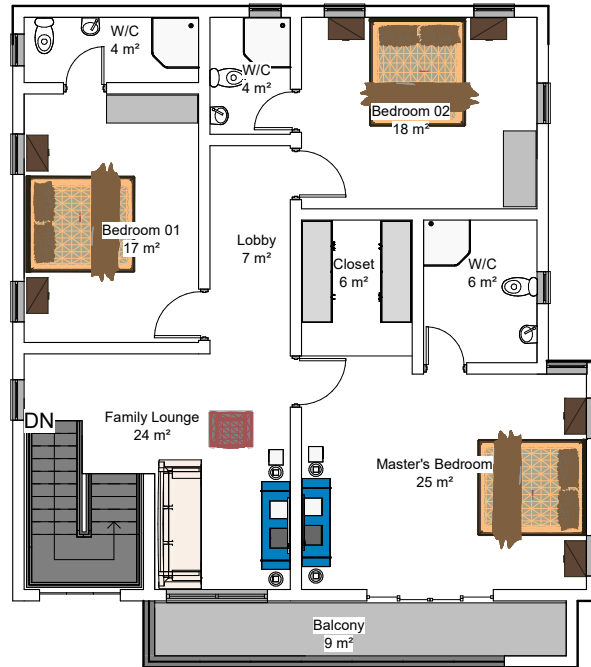
This unit type offers extensive indoor and outdoor space, giving homeowners privacy and room for elegant landscaping or a small garden.

Each detached duplex is designed with premium finishes, modern fixtures, and attention to every detail, creating a sanctuary for families.

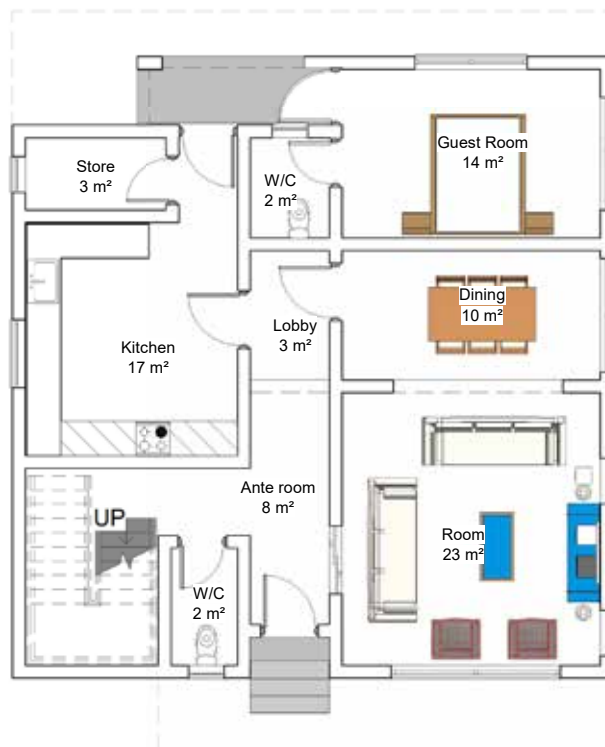
Residents here benefit from Solaris Court's prime location, accessible services, and community features, including round-the-clock security and child-friendly areas



300SQMs



First Floor



Ground Floor

450SQMs

Colonel

Exclusive Living with Enhanced Privacy and Luxury:

The Colonel plot size is designed to accommodate a 5-bedroom fully detached duplex, offering an impressive layout perfect for larger families or those who value spacious interiors and outdoor areas.

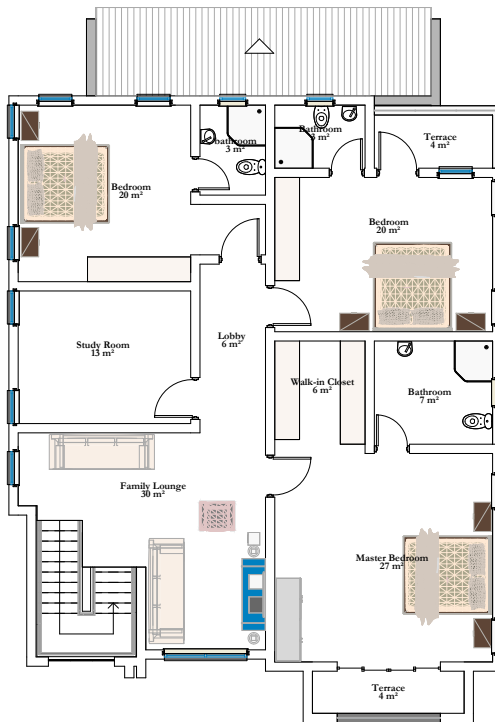
This home is crafted for comfort, with extensive living areas, en-suite bedrooms, and premium features tailored to elevate everyday living.

The Colonel plot is ideal for those who enjoy entertaining guests or hosting family events, with plenty of room for personalization.

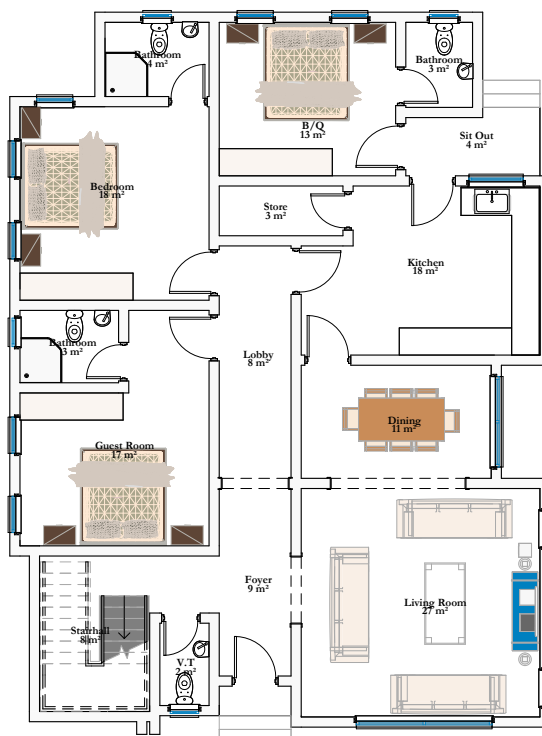
Residents will relish the estate's high-quality infrastructure, secure environment, and the advantage of living in a well-connected, exclusive community



450SQMs



First Floor



Ground Floor

750SQMs

General

Exceptional Investment Opportunity with Multi-Unit Options:

The General plot, the largest available at Solaris Court, offers an unparalleled opportunity for investment or family-oriented multi-unit living.

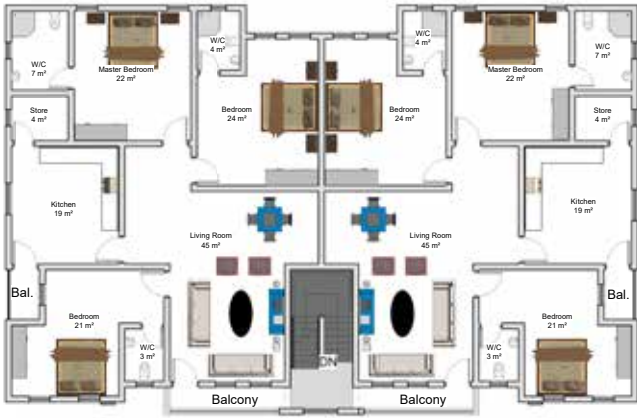
Designed to host six units of 3-bedroom apartments, this land size is perfect for those who envision a shared family estate or wish to generate rental income.

The structure is thoughtfully planned to maximize space and comfort, with modern aesthetics and functionality in each unit.

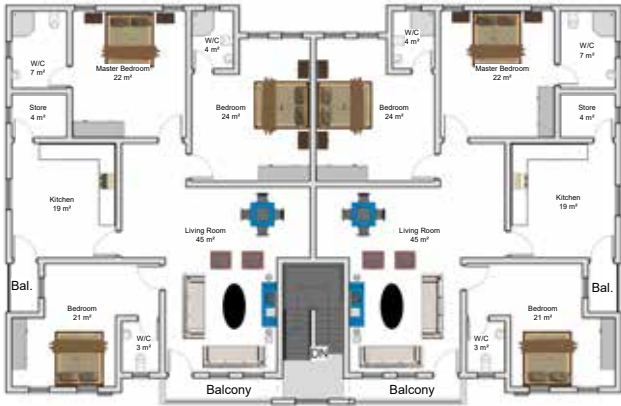
With all the amenities Solaris Court offers, including perimeter fencing, security, and convenient access to Lifecamp's attractions, this plot size provides exceptional value and a prestigious address for both investors and families



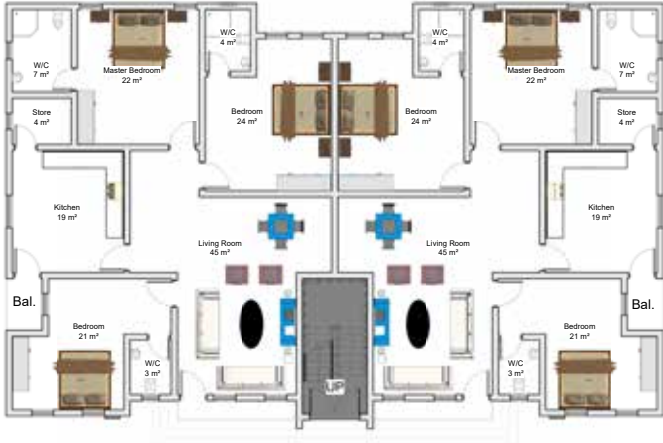
750SQMs



First Floor



Second Floor



Ground Floor

Bringing Life To Living



NO. 8 Abdullahi Ibrahim Street, Utako FCT, Abuja  +234 905 055 6897 | 0818 644 5930

 info@edinandpeople.com  www.edinandpeople.com