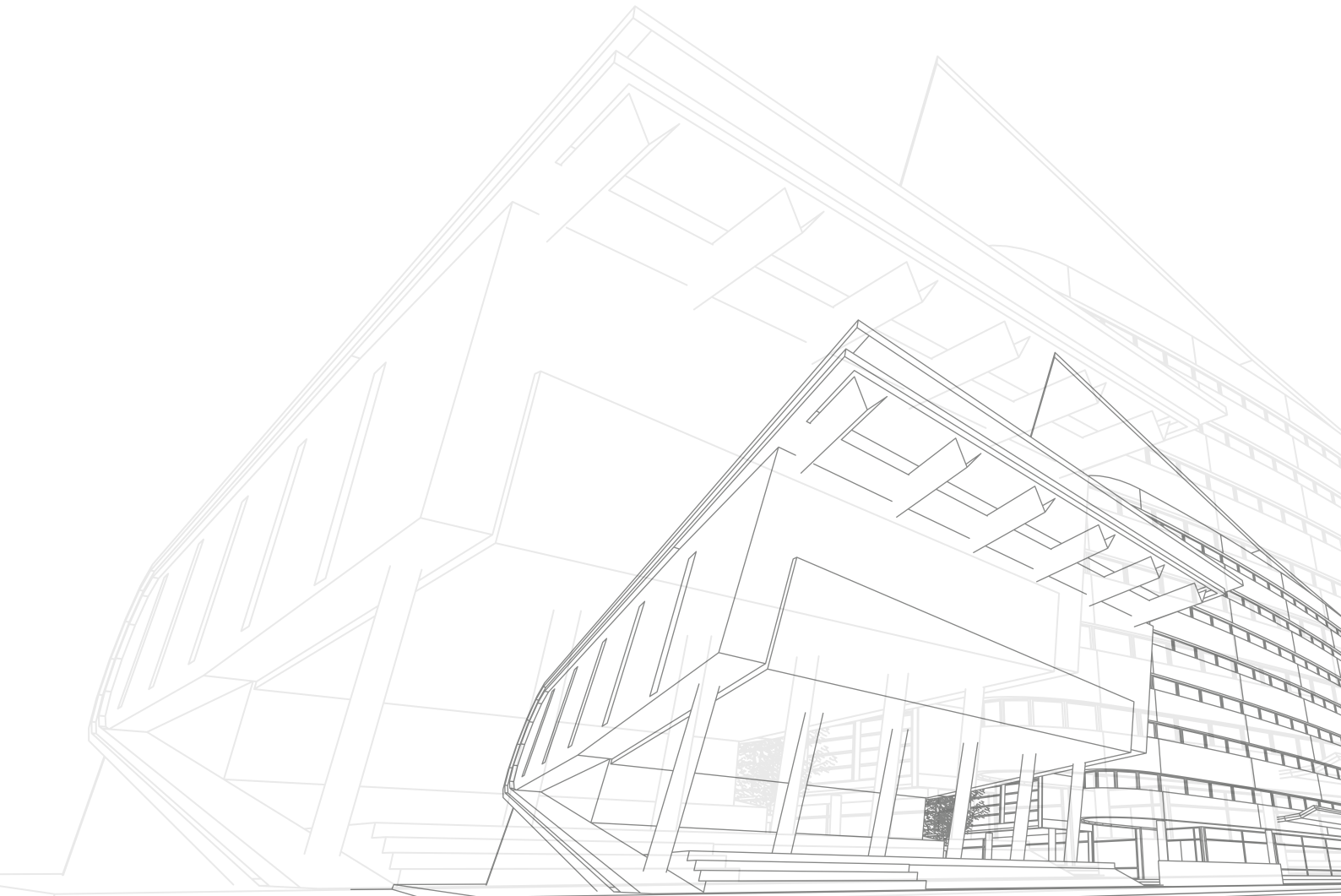


INVEST IN LAND

Starlight

 **Kyami**



WELCOME HOME

Nestled in the serene environs of Kyami, Starlight is a premier residential community that blends modern luxury with natural beauty. Developed by Edin and People Limited, this premier estate offers a harmonious blend of modern architecture, serene environment, and a vibrant community lifestyle, designed to cater to your every need, providing comfort, elegance, and convenience in every corner.

Additionally, this jewel offers a range of premium amenities to ensure a comfortable and vibrant lifestyle for all residents.

Starlight enjoys excellent connectivity to major parts of Abuja. The strategic location ensures residents have easy access to:

- Central Business District: Quick commute to work and business hubs.
- Airports: Convenient travel for business and pleasure.
- Major Highways: Seamless connectivity to the rest of the city.
- Recreational and Entertainment Hubs: Enjoy the best of Abuja's vibrant culture.

- ✔ 24 Hours Security
- ✔ Perimeter Fence
- ✔ Accessibility
- ✔ Playground for Kids
- ✔ Proximity to Amenities
- ✔ Value Proposition

Available Plots

175M²

200M²

350M²

450M²

800M²

Enjoy the best in modern living

1. 24/7 Security
Peace of mind with round-the-clock protection

2. Paved Roads and Walkways
Beautifully landscaped and well-maintained.

3. Landscaped Gardens
Green spaces for relaxation and play.

4. Recreational Areas
Perfect for family activities and leisure.

5. Shopping and Retail Centers
Convenient access to daily essentials

6. Schools and Healthcare Facilities

175SQMs

Lieutenant

Ideal for a Cozy, Efficient Living Space:

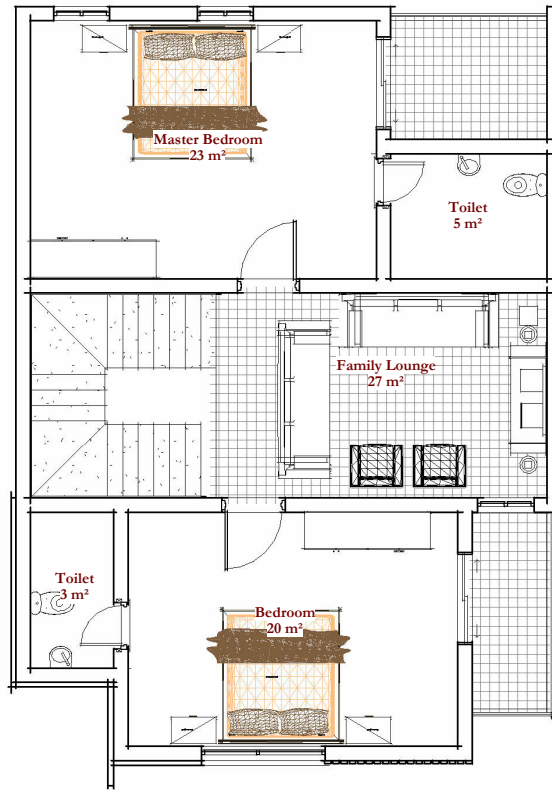
The Lieutenant plot size offers a compact yet luxurious footprint, perfect for a 3-bedroom terrace duplex. Designed with modern living in mind, this unit emphasizes space efficiency without sacrificing comfort.

Each terrace comes with carefully crafted interiors, allowing ample room for family gatherings, cozy retreats, and personal relaxation areas.

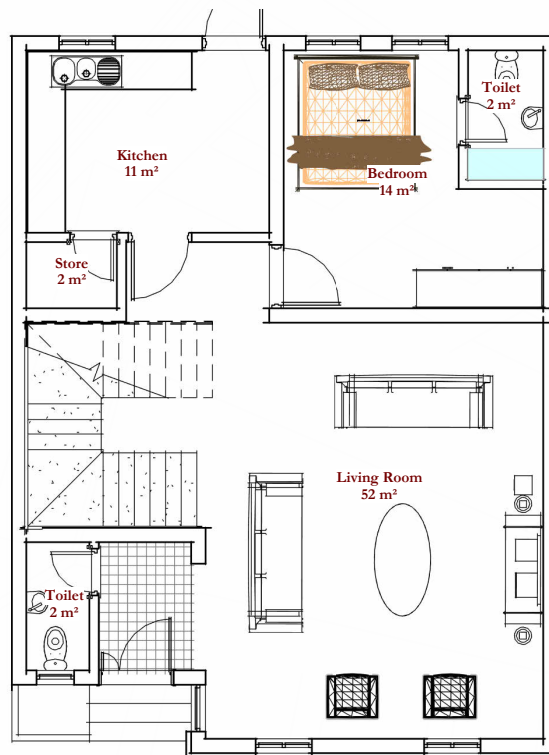
Living in Starlight means access to a community with 24/7 security, perimeter fencing, and quick access to amenities, making this an ideal choice for young families or professionals looking for a stylish, low-maintenance home in the heart of Kyami.



175SQMs



FIRST FLOOR



GROUND FLOOR

200SQMs

Major

A Versatile Space for Growing Families:

The Major plot size, accommodating a 4-bedroom semi-detached duplex, is the perfect blend of space and convenience.

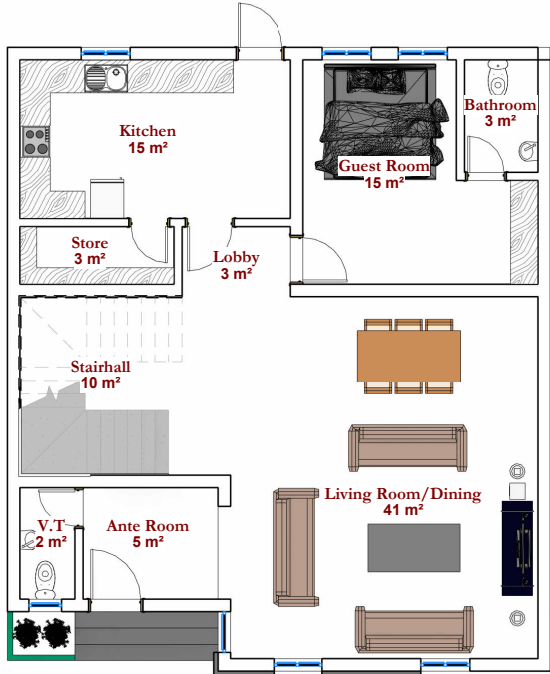
Each duplex in this category boasts open floor plans, spacious bedrooms, and private outdoor areas designed to give residents a sense of tranquility and connection to nature.

This plot provides more room to expand and is ideal for growing families who desire a bit more space.

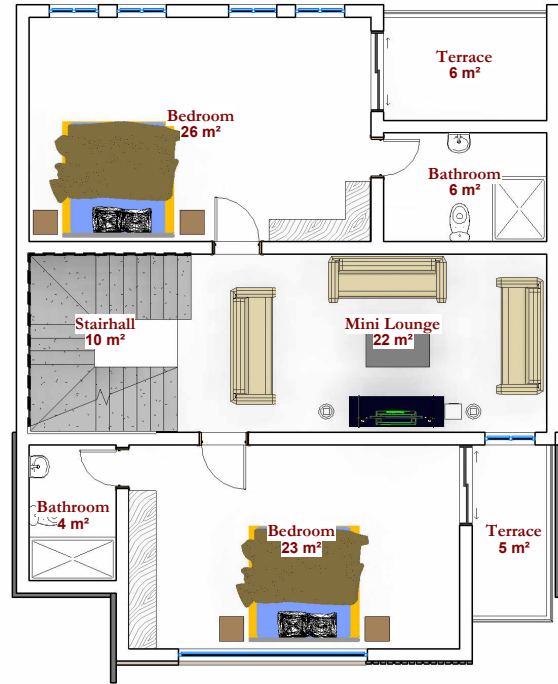
Located within the secure boundaries of Starlight, residents will enjoy playgrounds, well-manicured common areas, and proximity to essential amenities, ensuring a well-rounded living experience.



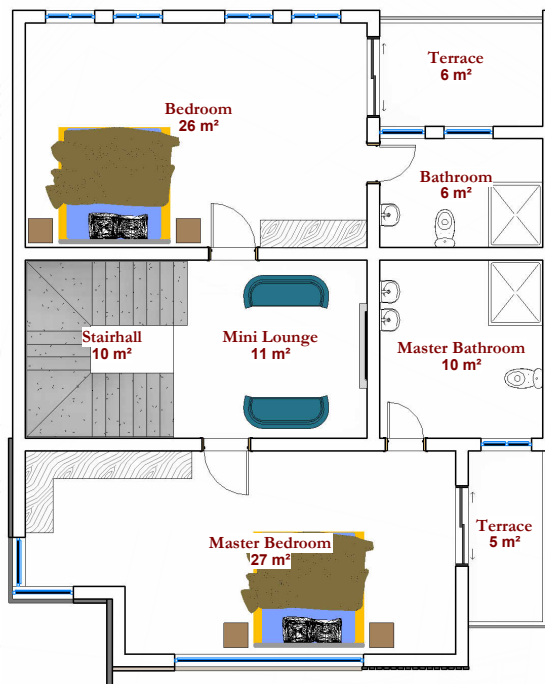
200SQMs



Ground Floor Plan



First Floor Plan



Second Floor Plan

350SQMs

Captain

Luxury and Independence with Ample Space:

For those seeking a blend of independence and spacious living, the Captain plot at Starlight is ideal, supporting a 4-bedroom fully detached duplex.

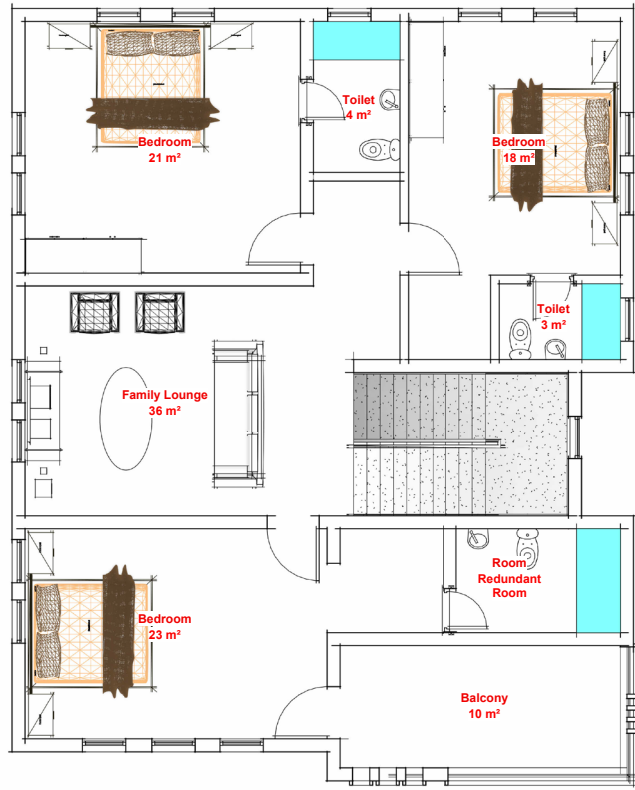
This unit type offers extensive indoor and outdoor space, giving homeowners privacy and room for elegant landscaping or a small garden.

Each detached duplex is designed with premium finishes, modern fixtures, and attention to every detail, creating a sanctuary for families.

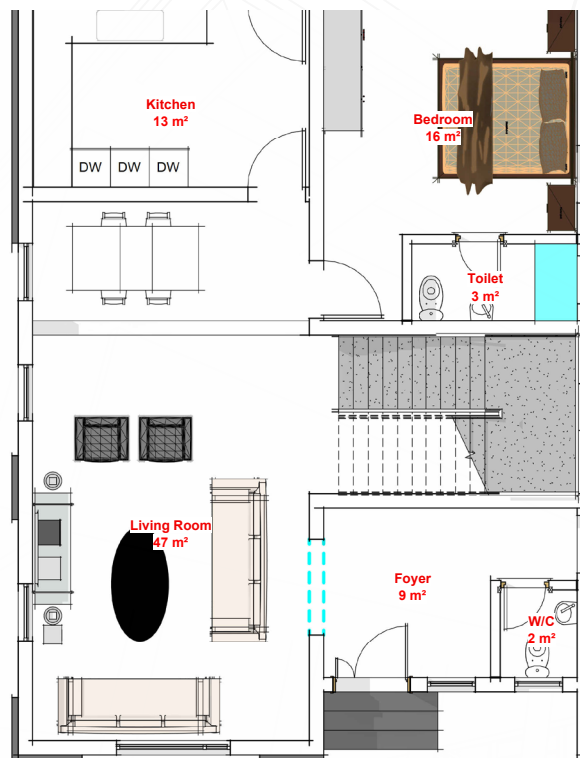
Residents here benefit from Starlight's prime location, accessible services, and community features, including round-the-clock security and child-friendly areas



350SQMs



FIRST FLOOR



GROUND FLOOR

450SQMs

Colonel

Exclusive Living with Enhanced Privacy and Luxury:

The Colonel plot size is designed to accommodate a 5-bedroom fully detached duplex, offering an impressive layout perfect for larger families or those who value spacious interiors and outdoor areas.

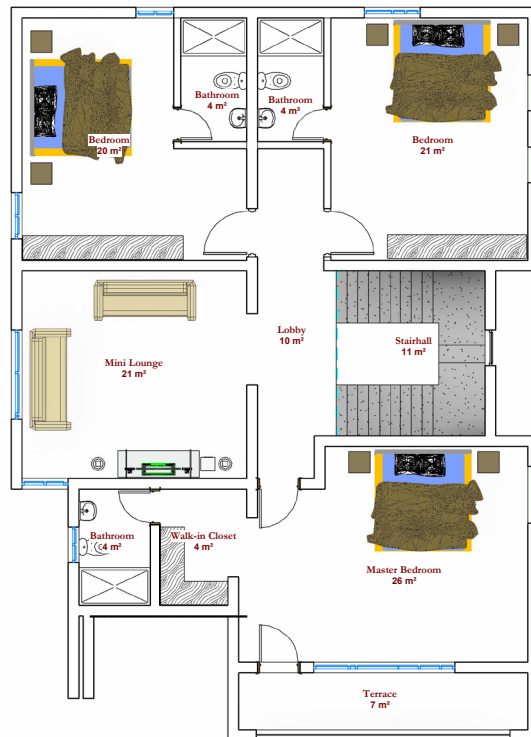
This home is crafted for comfort, with extensive living areas, en-suite bedrooms, and premium features tailored to elevate everyday living.

The Colonel plot is ideal for those who enjoy entertaining guests or hosting family events, with plenty of room for personalization.

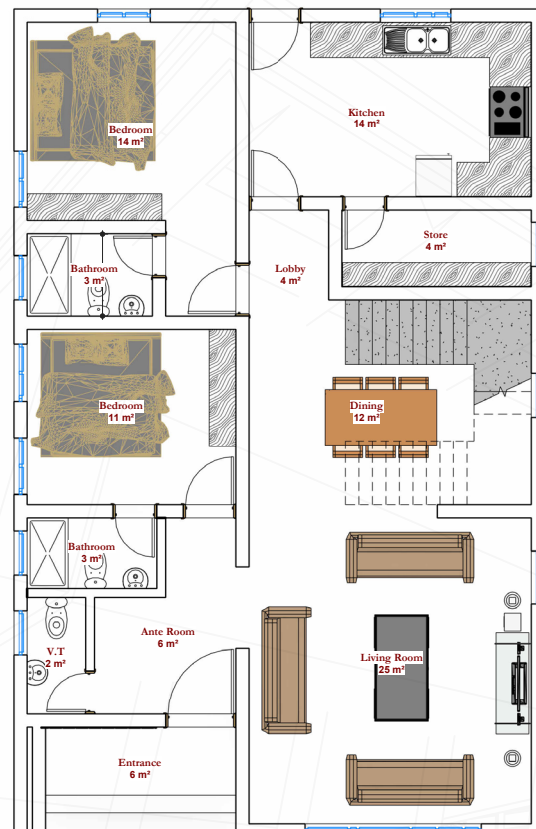
Residents will relish the estate's high-quality infrastructure, secure environment, and the advantage of living in a well-connected, exclusive community



450SQMs



First Floor Plan



Ground Floor Plan

800SQMs

General

Exceptional Investment Opportunity with Multi-Unit Options:

The General plot, the largest available at Starlight, offers an unparalleled opportunity for investment or family-oriented multi-unit living.

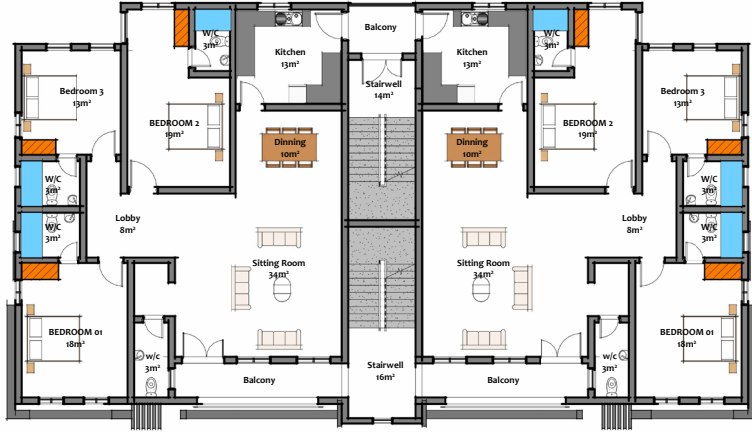
Designed to host six units of 3-bedroom apartments, this land size is perfect for those who envision a shared family estate or wish to generate rental income.

The structure is thoughtfully planned to maximize space and comfort, with modern aesthetics and functionality in each unit.

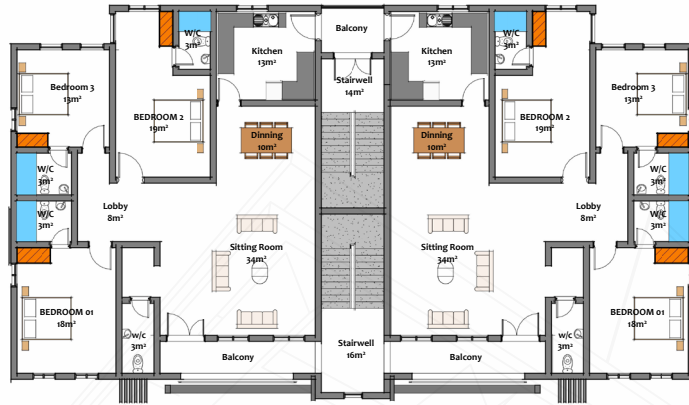
With all the amenities Starlight offers, including perimeter fencing, security, and convenient access to Kyami's attractions, this plot size provides exceptional value and a prestigious address for both investors and families.



800SQMs



FIRST FLOOR PLAN



SECOND FLOOR PLAN



GROUND FLOOR PLAN

Bringing Life To Living



NO. 8 Abdullahi Ibrahim Street, Utako FCT, Abuja  +234 905 055 6897 | 0818 644 5930

 info@edinandpeople.com  www.edinandpeople.com