



REAL ESTATE | INVESTMENT | PROJECT MANAGEMENT

Trojan Villas

📍 Katampe Extension



Trojan Villas

Abuja is not just a city; it's a statement! And if you're looking to make yours loud and clear, Trojan Villas at Katampe Extension is where you can do that. Nestled in a prime diplomatic zone behind the prestigious ECOWAS Quarters, and sitting on 4 hectares, this estate offers the perfect blend of exclusivity, security, and luxury.

Imagine waking up in a serene environment, surrounded by the city's elite from a hill top view, with top-tier infrastructure, seamless access to the best amenities, and a home that appreciates in value daily. Trojan Villas isn't just another property—it's a legacy in the making!

Available Plot Sizes

300 SQM

450 SQM

WHY CHOOSE 300 SQM?

- More affordable entry into Katampe's premium real estate market
- Easy maintenance yet spacious enough for comfortable living
- High rental demand for semi-detached homes in Abuja

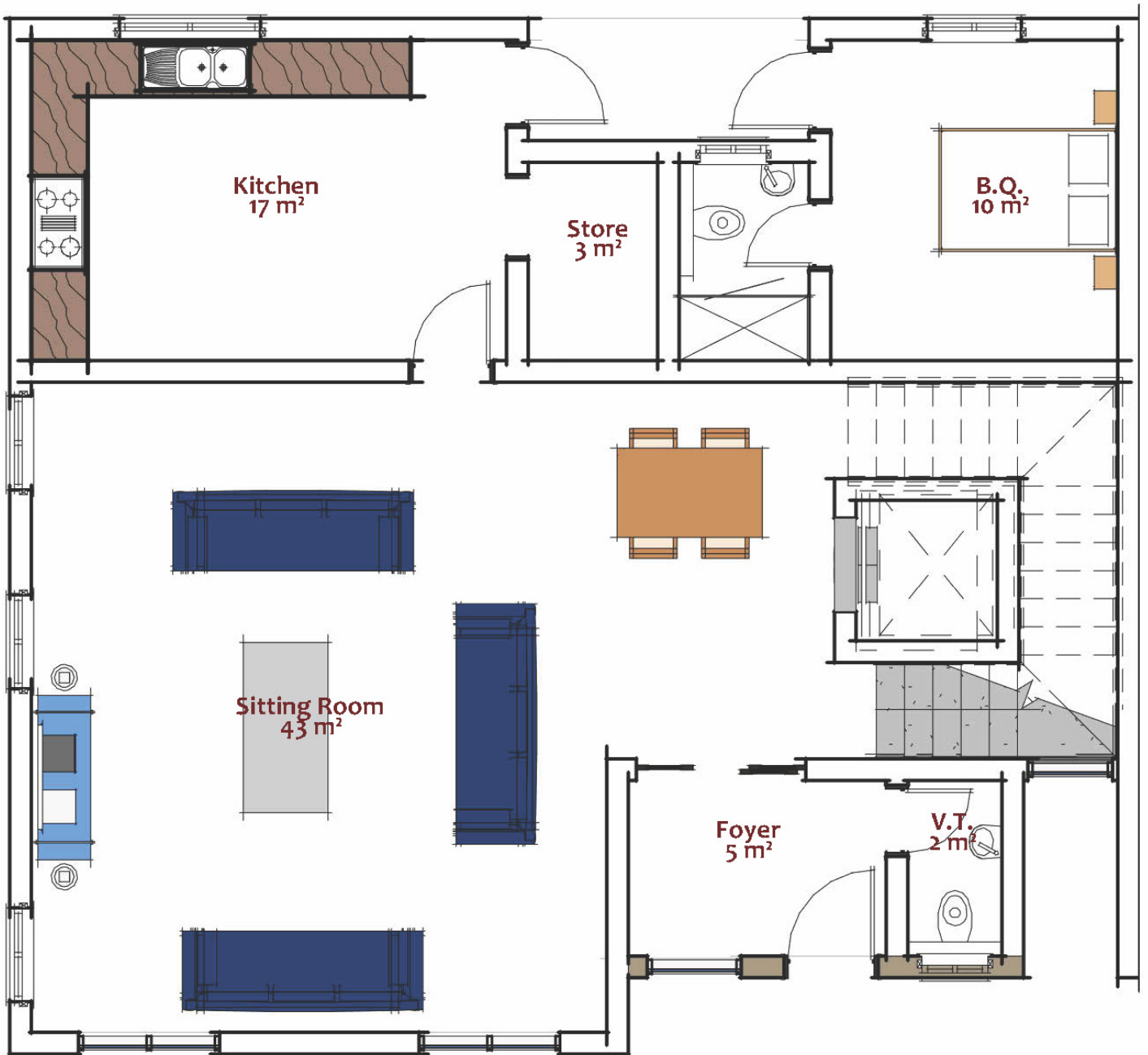
WHY CHOOSE 450 SQM?

- A statement home that reflects success and class
- More freedom to customize and expand your living space
- Premium neighborhood with top-tier property appreciation

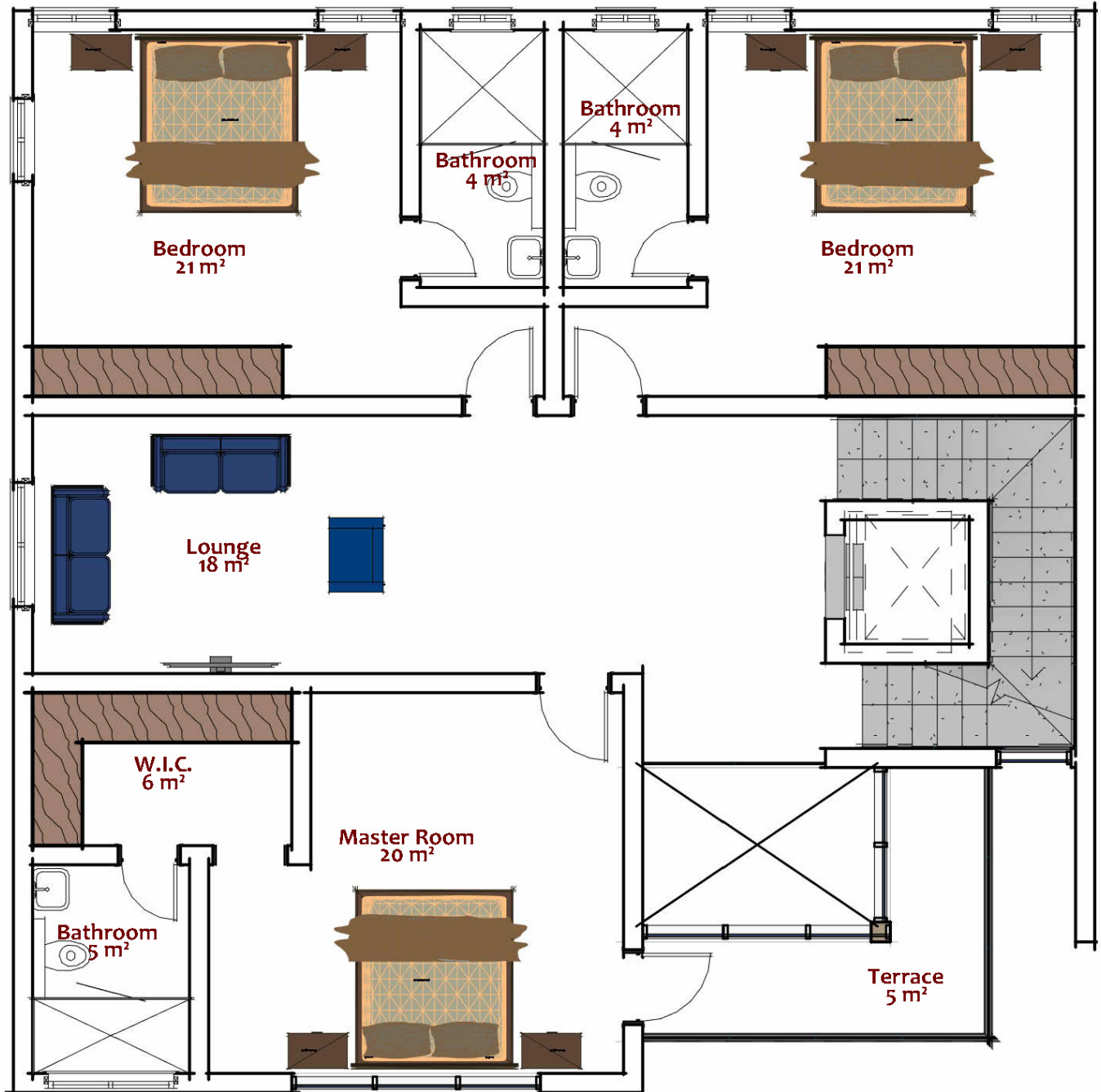
300 SQM – MAJOR (5 Bedroom Semi-Detached Duplex + Maid's Room)

- Perfect for a 5-Bedroom Semi-Detached Duplex + Maid's Room
- Ideal for families looking for spacious yet affordable luxury
- Thoughtfully designed to maximize living space without breaking the bank
- A fantastic opportunity for investors who want to earn rental income in a prime location





Ground Floor Plan



First Floor Plan



Second Floor Plan

450 SQM – CAPTAIN

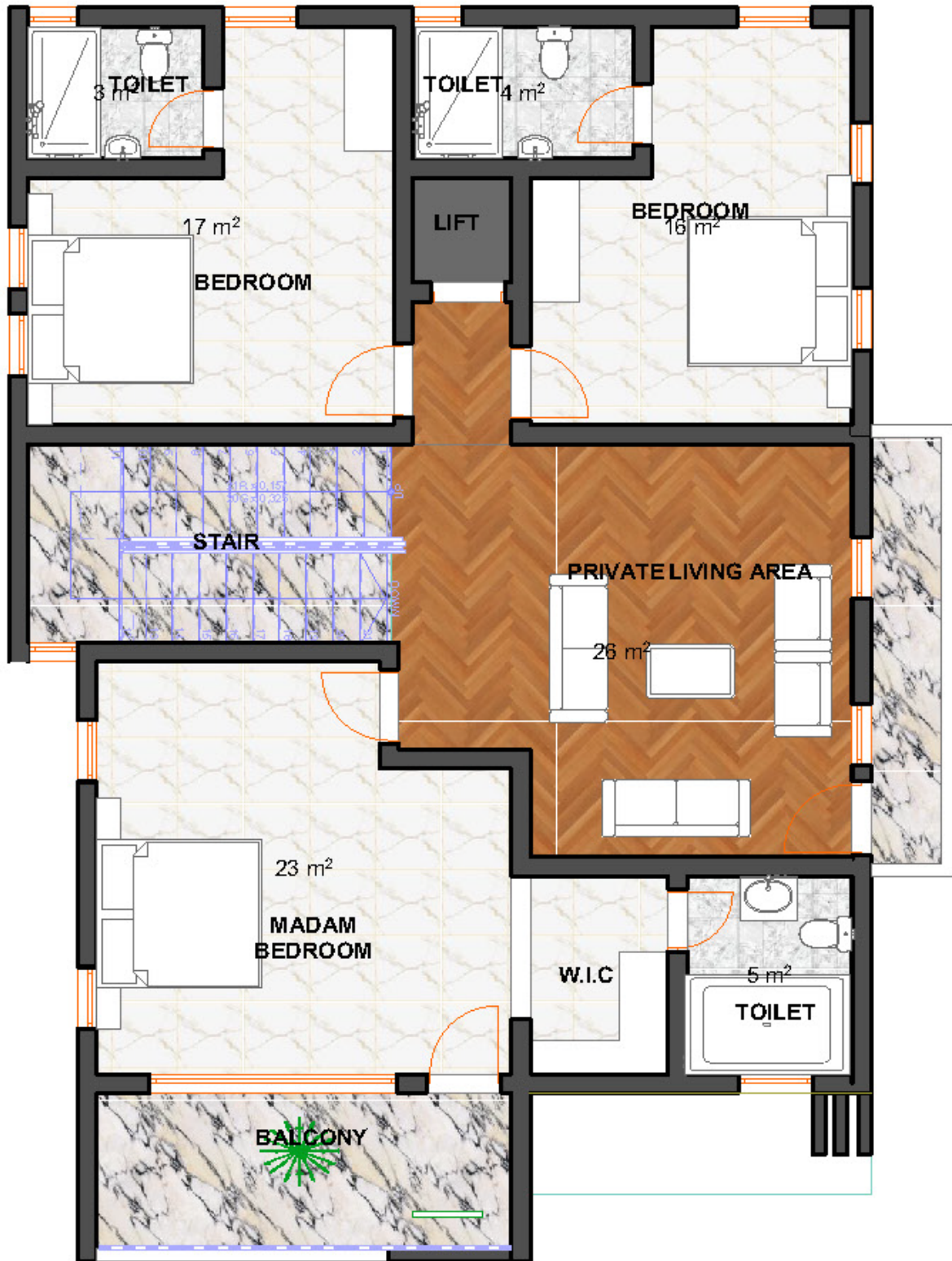
(5 Bedroom Fully-Detached Duplex)

- Designed for a 5-Bedroom Fully Detached Duplex
- When privacy and space matter, this is the perfect choice
- A grand architectural masterpiece with spacious interiors, modern fittings, and elegant finishing
- Ample parking space, private garden, and a luxurious ambiance





GROUND FLOOR



FIRST FLOOR



SECOND FLOOR

Bringing Life To Living



📍 N0.5 Mamman Kontagora Crescent, Katampe Extension, Abuja

☎ +234 905 055 6897 | 0818 644 5930

🌐 info@edinandpeople.com

🌐 www.edinandpeople.com