



REAL ESTATE | INVESTMENT | PROJECT MANAGEMENT

Trojan Villas

📍 Katampe Extension





At Edin&People Limited, we believe that owning a piece of real estate is more than just a transaction—it's a legacy, a foundation for growth, and a step toward financial freedom.

In a country where the housing deficit remains a pressing challenge, our mission is clear: to empower Nigerians with affordable, secure, and high-value real estate opportunities. We don't just sell land; we provide the blueprint for wealth creation and generational ownership.

As the CEO of Edin & People, I am deeply committed to making property ownership accessible to Nigerians of all backgrounds and circumstances. I invite you to think about property ownership as more than a financial decision. Through integrity, innovation, and unwavering commitment, we have built a company that prioritizes trust, transparency, and excellence. Whether you are looking to invest, build your dream home, or secure land for the future, Edin&People Limited is here to guide you every step of the way.

Welcome to a future where real estate is not just an asset—but a promise fulfilled.

Ijahenda James Margimari
CEO/MD, Edin and People Limited

Welcome
HOME

24/7 Security

Paved Roads and
Walkways

Landscaped
Gardens

Recreational
Areas

Proximity to Schools
and Healthcare Facilities

Shoprite



Trojan Villas

Abuja is not just a city; it's a statement! And if you're looking to make yours loud and clear, Trojan Villas at Katampe Extension is where you can do that. Nestled in a prime diplomatic zone behind the prestigious ECOWAS Quarters, and sitting on 4 hectares, this estate offers the perfect blend of exclusivity, security, and luxury.

Imagine waking up in a serene environment, surrounded by the city's elite from a hill top view, with top-tier infrastructure, seamless access to the best amenities, and a home that appreciates in value daily. Trojan Villas isn't just another property—it's a legacy in the making!

Available Plot Sizes

150 SQM

WHY CHOOSE 150 SQM?

- Affordable access to Katampe's premium real estate
- Easy to maintain with maximum comfort
- High rental yield for short and long-term leases



300 SQM

WHY CHOOSE 300 SQM?

- More affordable entry into Katampe's premium real estate market
- Easy maintenance yet spacious enough for comfortable living
- High rental demand for semi-detached homes in Abuja



450 SQM

WHY CHOOSE 300 SQM?

- A statement home that reflects success and class
- More freedom to customize and expand your living space
- Premium neighborhood with top-tier property appreciation

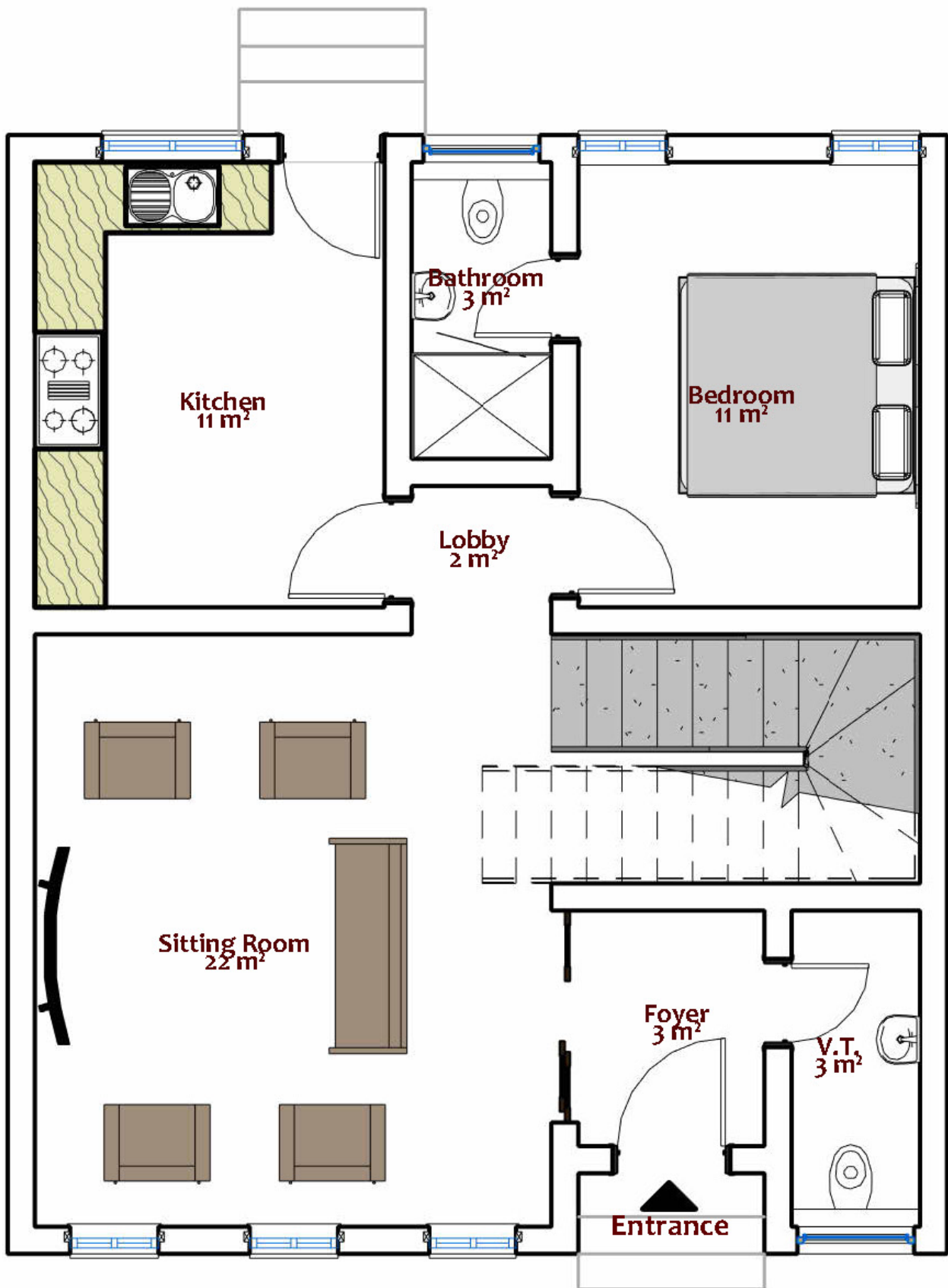


150 SQM – LIEUTENANT

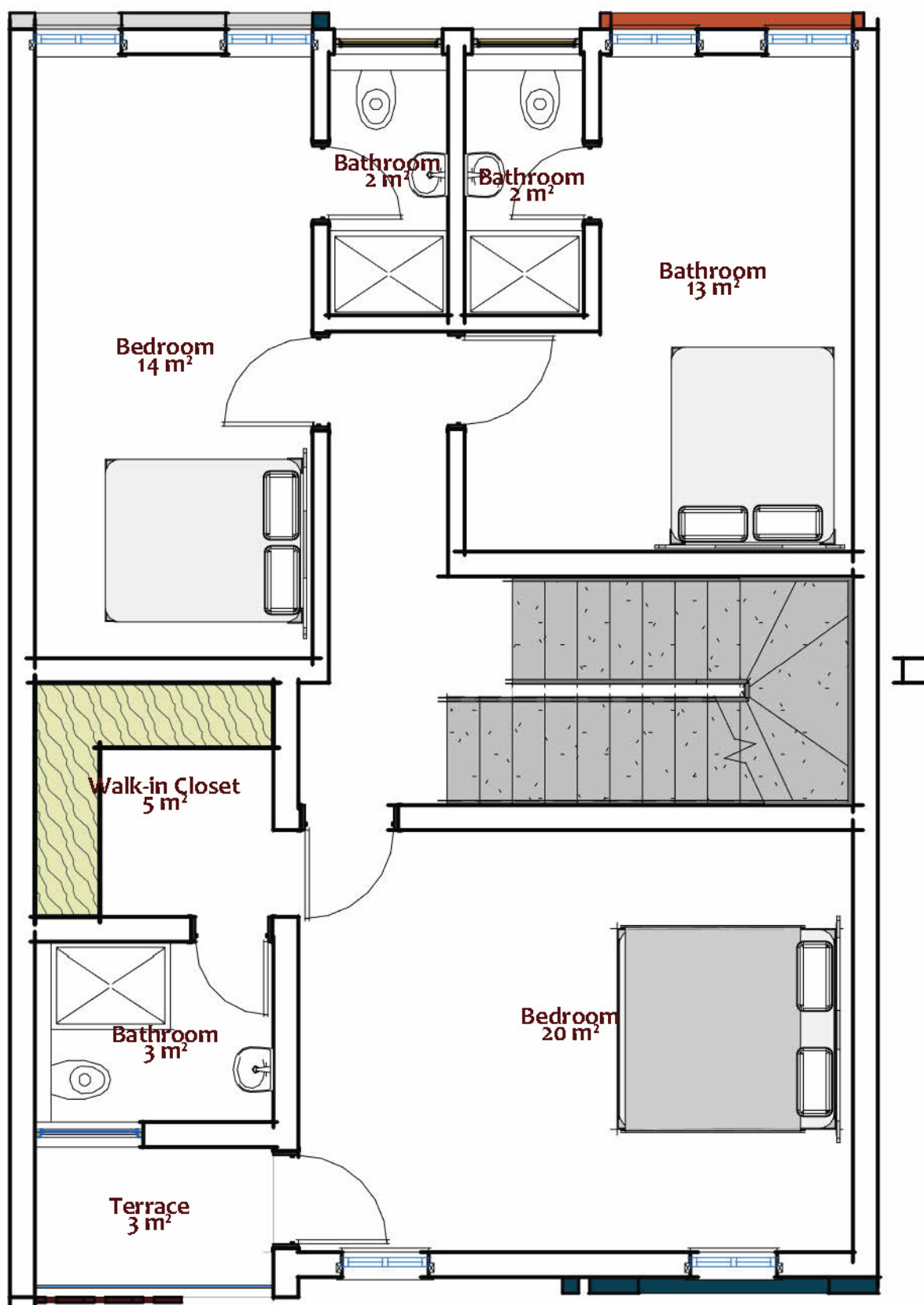
(4 Bedroom Terrace Duplex + BQ)

- Ideal for a 4 Bedroom Terrace Duplex
- Designed for young professionals, first-time homeowners, and savvy investors
- A modern, stylish home with functional space and low maintenance costs
- Perfect for those who want a taste of luxury at an entry-level price

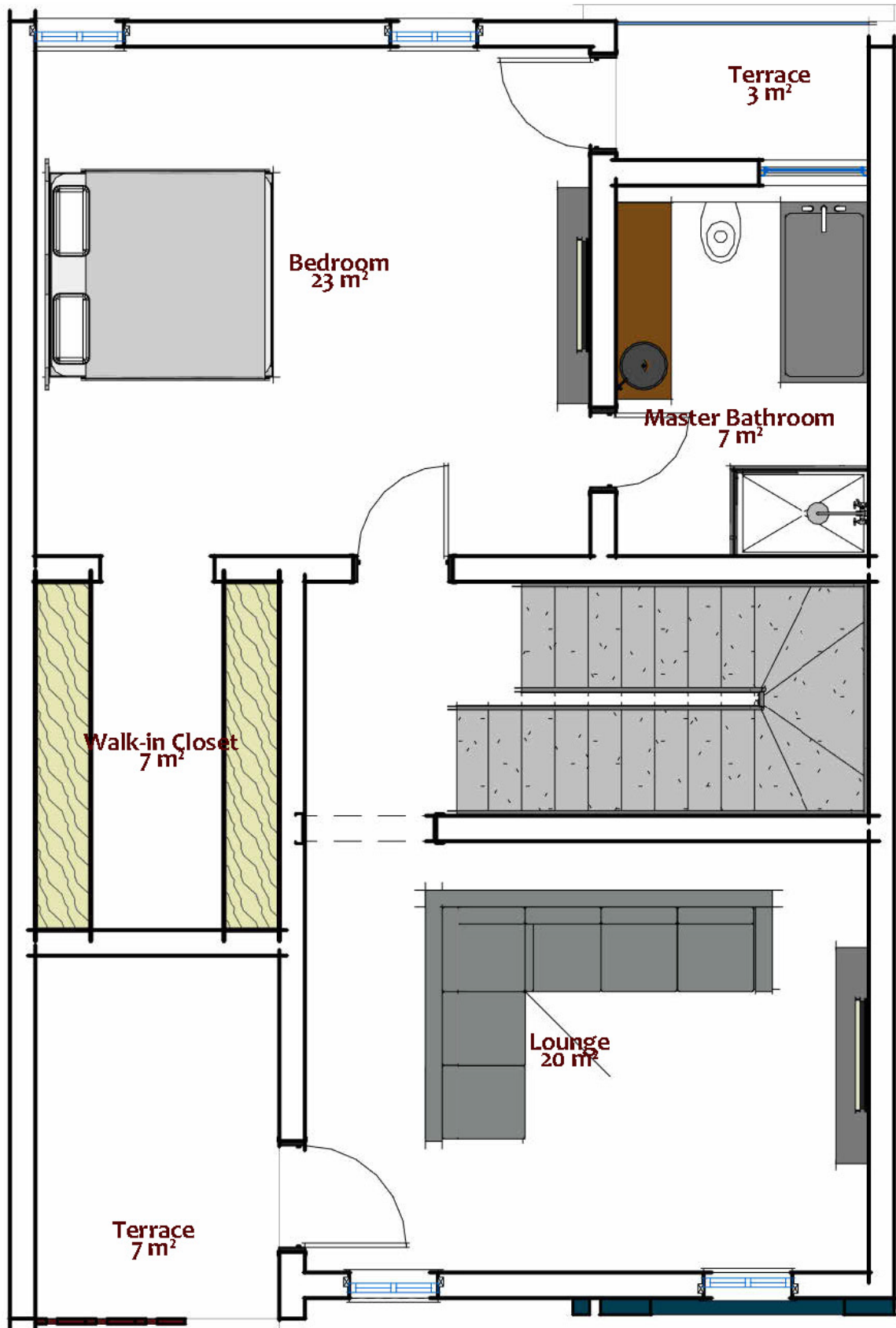




Ground Floor Plan



First Floor Plan

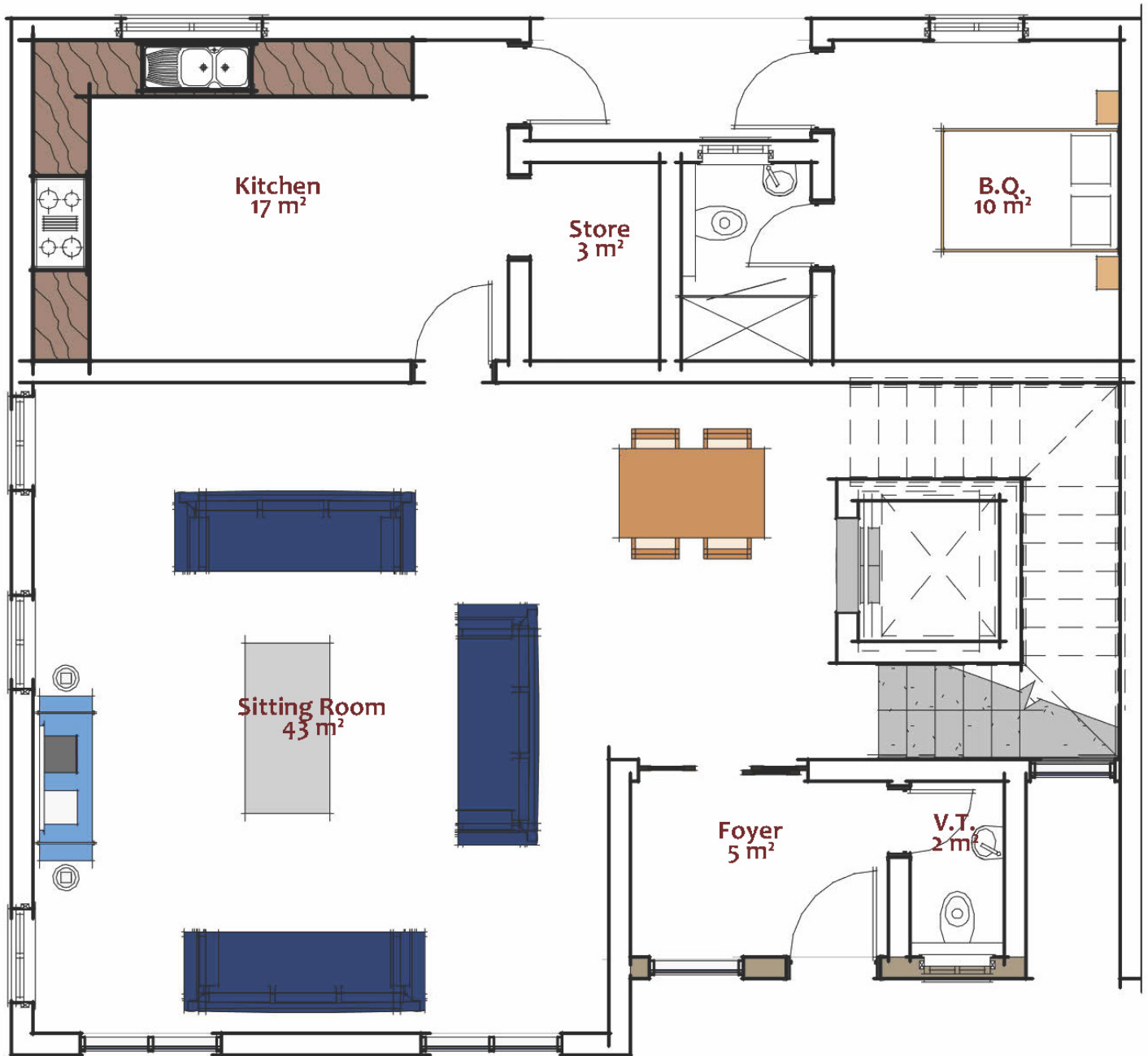


Second Floor Plan

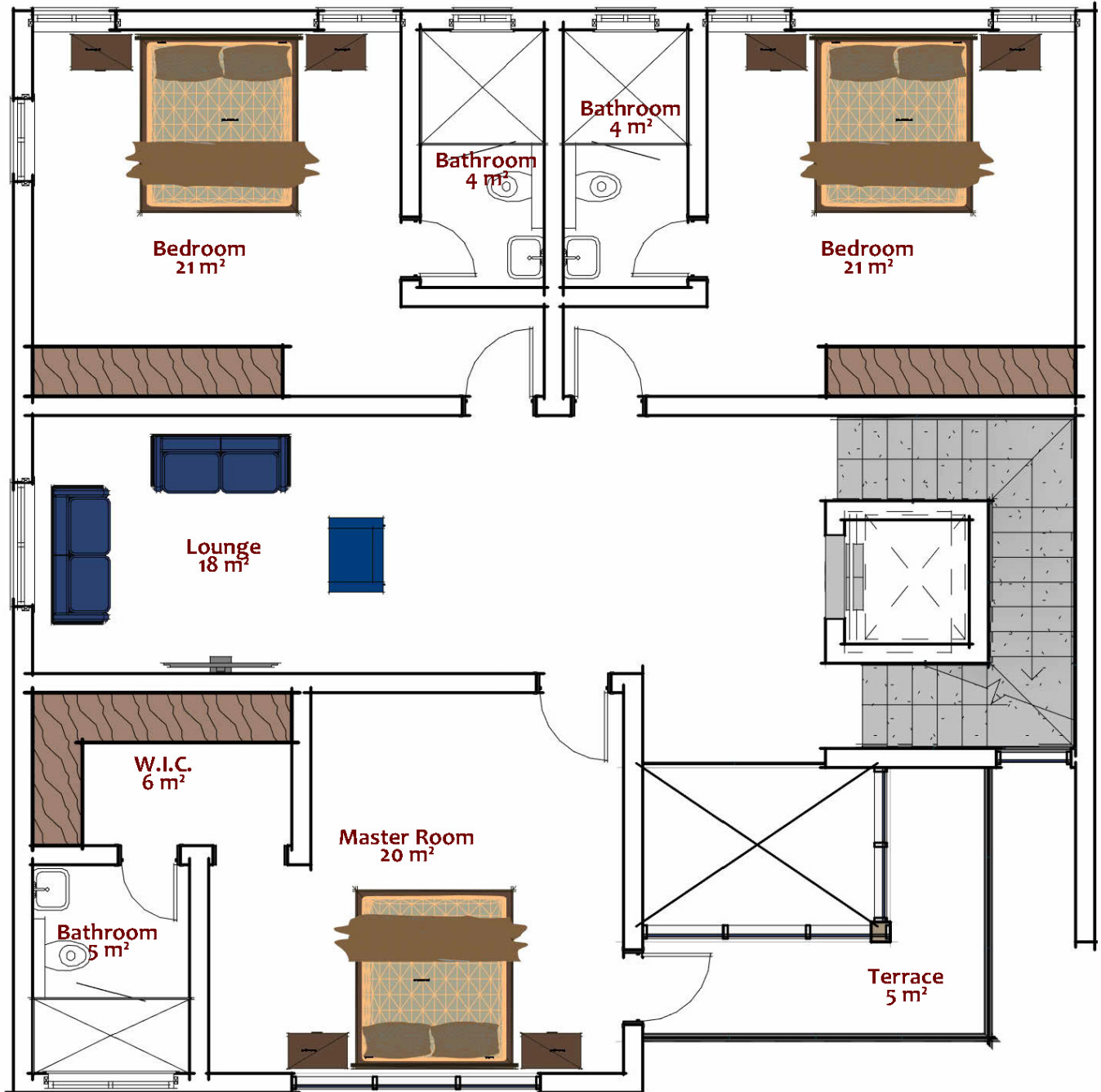
300 SQM – MAJOR (5 Bedroom Semi-Detached Duplex + Maid's Room)

- Perfect for a 5-Bedroom Semi-Detached Duplex + Maid's Room
- Ideal for families looking for spacious yet affordable luxury
- Thoughtfully designed to maximize living space without breaking the bank
- A fantastic opportunity for investors who want to earn rental income in a prime location

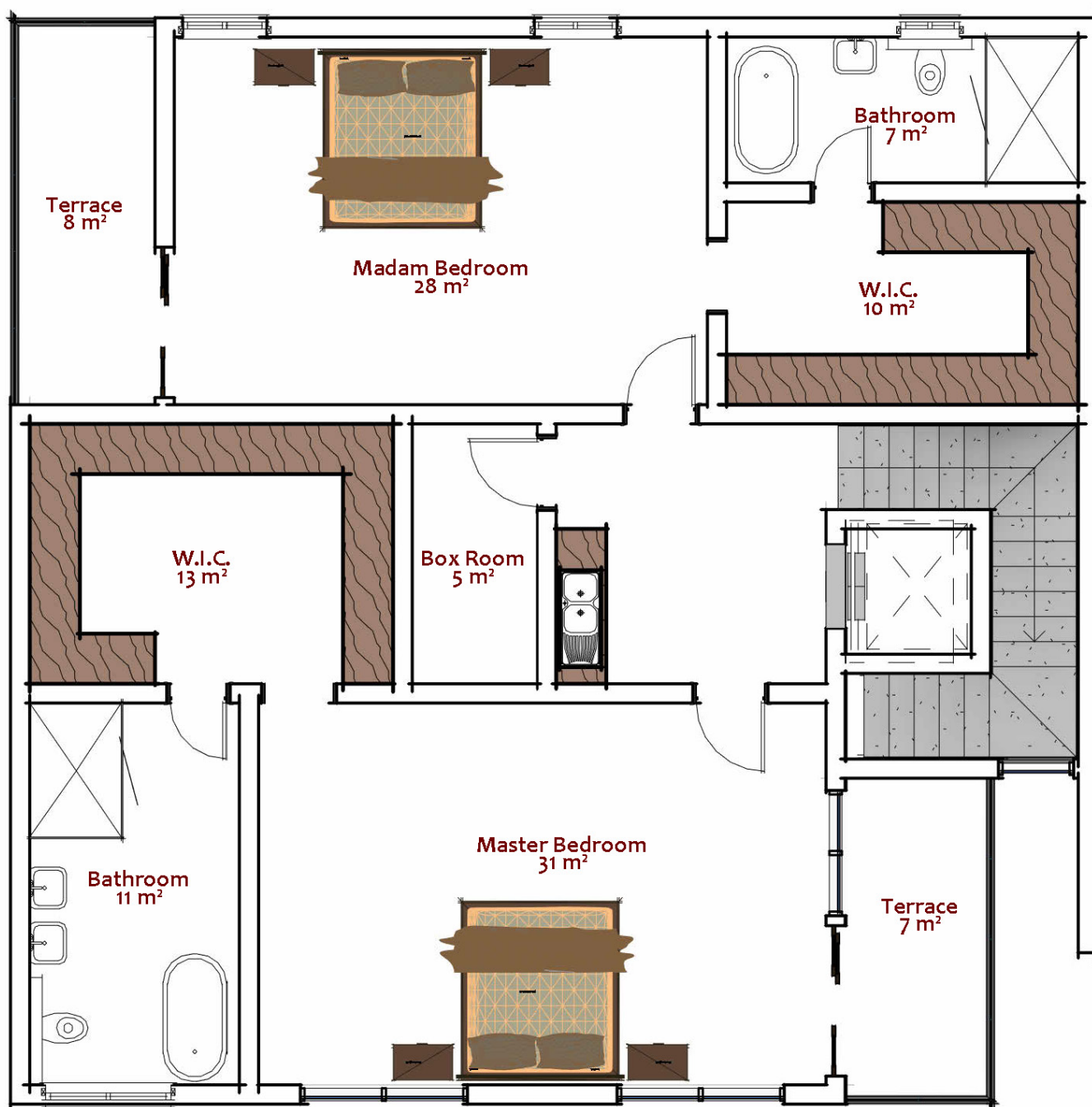




Ground Floor Plan



First Floor Plan



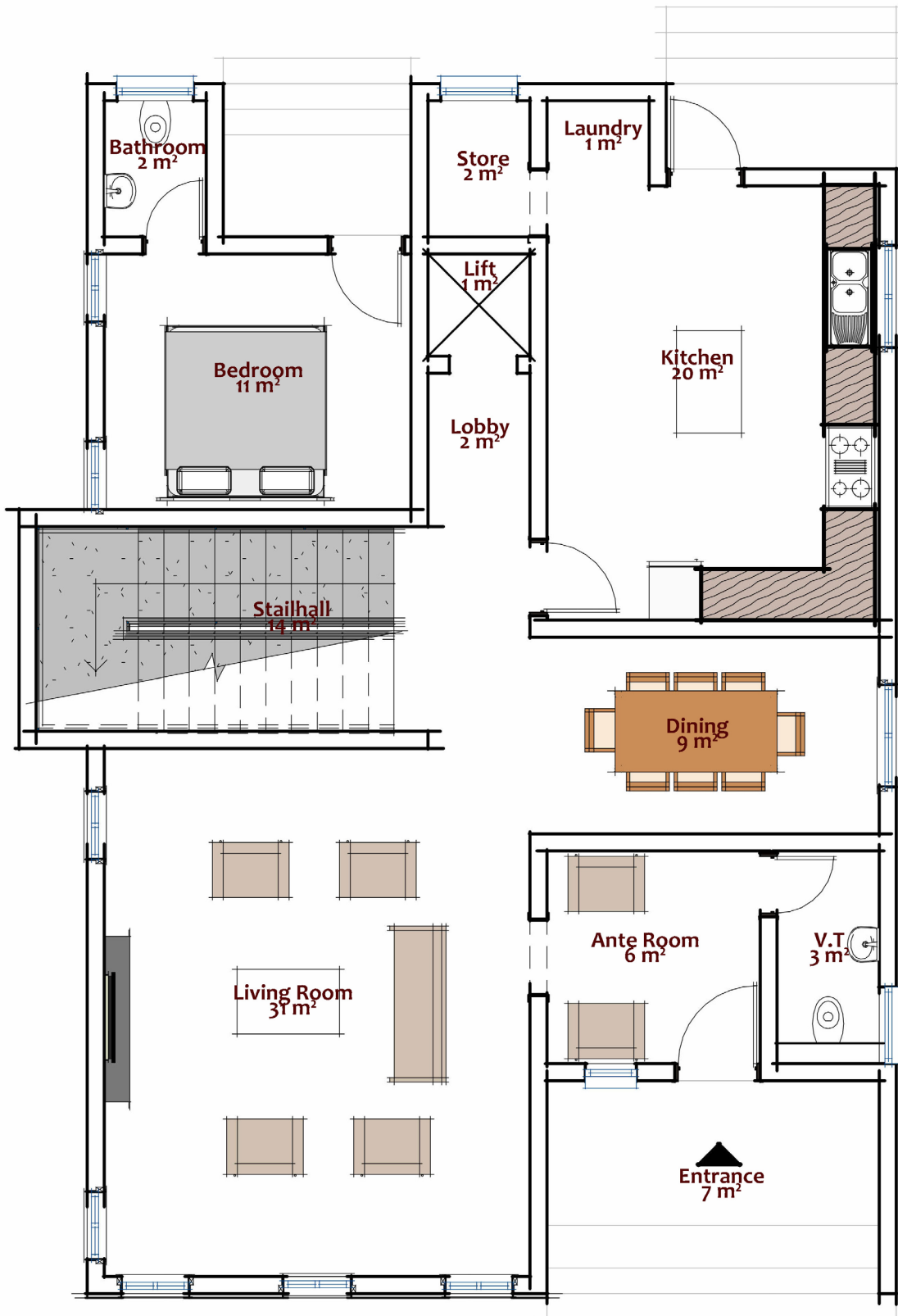
Second Floor Plan

450 SQM – CAPTAIN

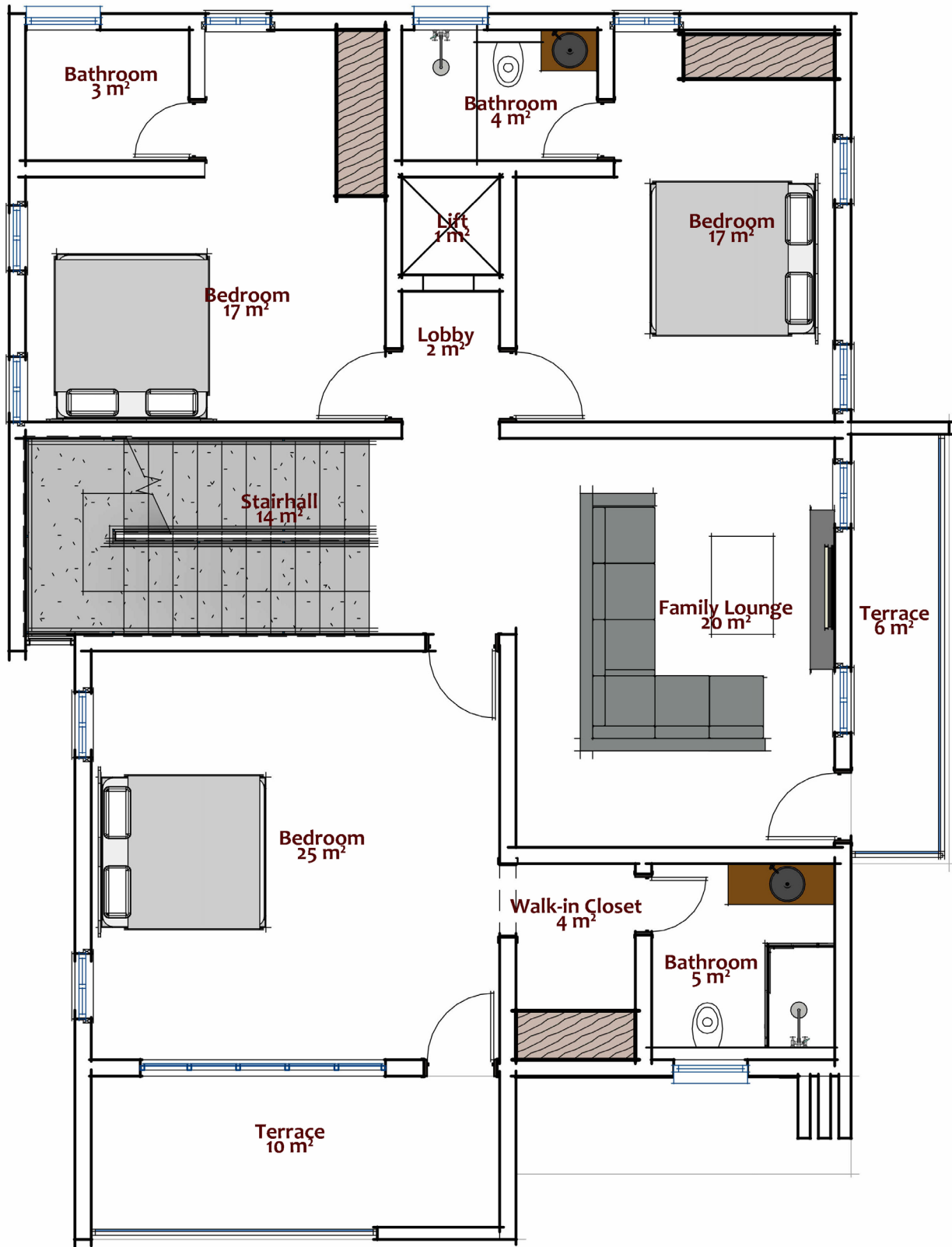
(5 Bedroom Fully-Detached Duplex + BQ)

- Designed for a 5-Bedroom Fully Detached Duplex + BQ
- When privacy and space matter, this is the perfect choice
- A grand architectural masterpiece with spacious interiors, modern fittings, and elegant finishing
- Ample parking space, private garden, and a luxurious ambiance

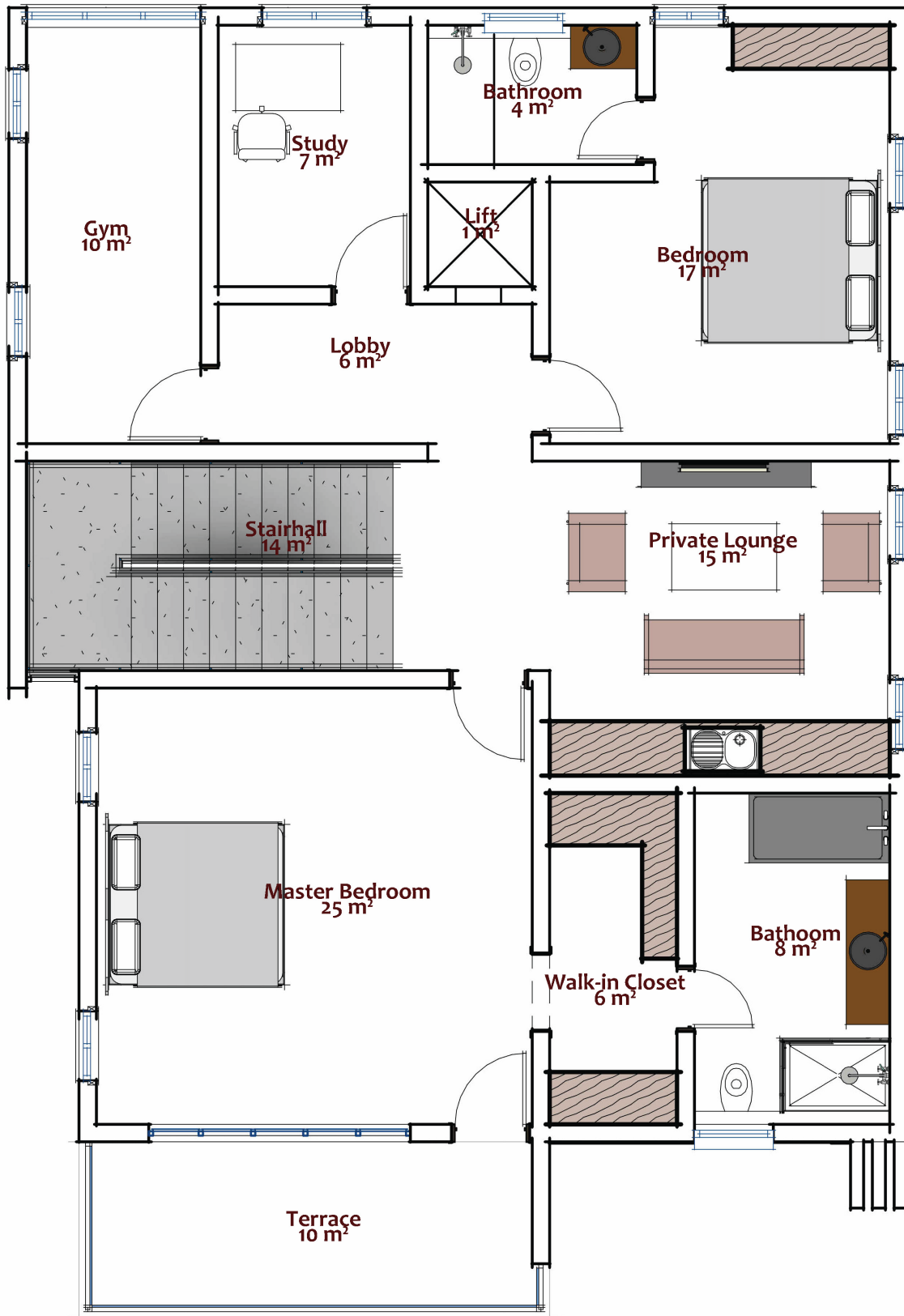




Ground Floor Plan



First Floor Plan



Second Floor Plan

ABOUT US

Edin & People Ltd. is a forward looking real estate solution based company with a visionary drive to innovate unique and unorthodox approach, challenging the ordinary to solve the rising housing needs and creating investment opportunities to its clientele and delivering unparalleled services with utmost courtesy, exceeding expectations and building life-long relationship through strategic partnership and leaving indelible mark and memories on who we affect.



Real Estate

The core of Edin & People is exceptional real estate development that comes with outstanding approach and design elements, aimed at impressing our clientele and also inspiring them to do more with us through sustainability.



Investment

With our unique business model and in-depth knowledge of the market, the Edin & People team is driving change across the investment sphere, stimulating the economy via our investment vehicle in real estate, aimed at guaranteeing returns on investment. We are dedicated to guiding investors through the active process to reach their goals. We take the time to learn their goals, expectations and concerns. Our only interest is YOU.



Project Management

Our project management team is sure to provide specialized guidance on project management to our clients which comprises of; Private Project Development Facility Management Renovations and Remodeling Real Estate Advisory Resident & Commercial Property Management



Bringing Life to Living

Edin & people
REAL ESTATE | INVESTMENT | PROJECT MANAGEMENT

© NO.5 Mamma Kontagora Crescent, Katampe Extension, Abuja | +234 905 055 6897 | 0818 644 5930

🌐 info@edinandpeople.com | 🌐 www.edinandpeople.com